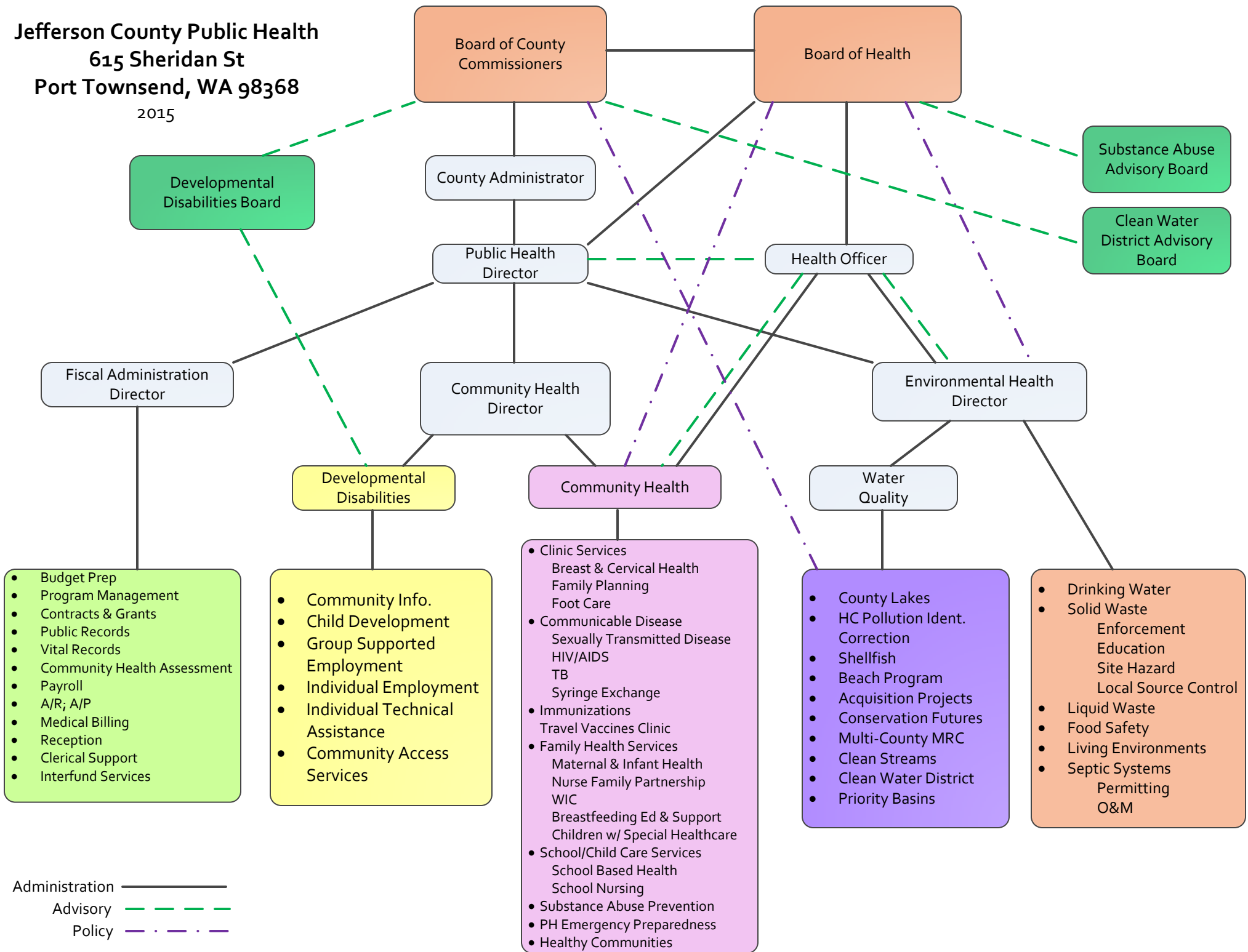


Jefferson County Public Health
615 Sheridan St
Port Townsend, WA 98368

2015



- Administration ———
- Advisory - - - - -
- Policy - · - · -

- Budget Prep
- Program Management
- Contracts & Grants
- Public Records
- Vital Records
- Community Health Assessment
- Payroll
- A/R; A/P
- Medical Billing
- Reception
- Clerical Support
- Interfund Services

- Community Info.
- Child Development
- Group Supported Employment
- Individual Employment
- Individual Technical Assistance
- Community Access Services

- Clinic Services
 - Breast & Cervical Health
 - Family Planning
 - Foot Care
- Communicable Disease
 - Sexually Transmitted Disease
 - HIV/AIDS
 - TB
 - Syringe Exchange
- Immunizations
 - Travel Vaccines Clinic
- Family Health Services
 - Maternal & Infant Health
 - Nurse Family Partnership
 - WIC
 - Breastfeeding Ed & Support
 - Children w/ Special Healthcare
- School/Child Care Services
 - School Based Health
 - School Nursing
- Substance Abuse Prevention
- PH Emergency Preparedness
- Healthy Communities

- County Lakes
- HC Pollution Ident. Correction
- Shellfish
- Beach Program
- Acquisition Projects
- Conservation Futures
- Multi-County MRC
- Clean Streams
- Clean Water District
- Priority Basins

- Drinking Water
- Solid Waste
 - Enforcement
 - Education
 - Site Hazard
 - Local Source Control
- Liquid Waste
- Food Safety
- Living Environments
- Septic Systems
 - Permitting
 - O&M