

Jefferson County WA - SAMPLE Ballot

A B C

Primary Election - Tuesday, August 7, 2018

This SAMPLE ballot contains all issues and races in this election. Your ballot may not contain All issues and races.

READ: Each candidate for partisan office may state a political party that he or she prefers. A candidate's preference does not imply that the candidate is nominated or endorsed by the party, or that the party approves of or associates with that candidate.

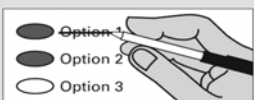
Instructions

How to vote



Use a dark blue or black ink pen to completely fill in the oval to the left of your choice. Vote for one in each race. If you vote for more than one, no votes will be counted for that race.

If you make a mistake



Draw a line through the entire measure response or candidate's name. Then you may make another choice.

Optional write-in



To vote for a candidate not listed for that race, fill in the oval to the left of the line and print the name of the candidate.

Additional Information: Sign and date the voter's declaration on the return envelope. Power of Attorney cannot be used to vote or sign a ballot for someone else.

For a replacement ballot, contact the Jefferson County Auditor's Office at (360) 385-9119 or elections@co.jefferson.wa.us

Return your ballot to a ballot drop box no later than 8:00 p.m. Election Day, or by mail (postmarked on or before Election Day).

For the online voters' guide and ballot drop box locations, go to www.myvote.wa.gov.

For a list of the people and organizations that donated to state and local candidates and ballot measure campaigns, visit www.pdc.wa.gov.

Federal - Partisan Office	Legislative District 24 - Partisan Offices
<p>United States Senator</p> <p><input type="radio"/> Thor Amundson (Prefers Independent Party)</p> <p><input type="radio"/> Dave Strider (Prefers Independent Party)</p> <p><input type="radio"/> Joey Gibson (Prefers Republican Party)</p> <p><input type="radio"/> Mike Luke (Prefers Libertarian Party)</p> <p><input type="radio"/> GoodSpaceGuy (Prefers Republican Party)</p> <p><input type="radio"/> Clint R. Tannehill (Prefers Democratic Party)</p> <p><input type="radio"/> Maria Cantwell (Prefers Democratic Party)</p> <p><input type="radio"/> Susan Hutchison (Prefers Republican Party)</p> <p><input type="radio"/> Brad Chase (Prefers FDFR Party)</p> <p><input type="radio"/> Tim Owen (Prefers Republican Party)</p> <p><input type="radio"/> Matthew D. Heines (Prefers Republican Party)</p> <p><input type="radio"/> Sam Wright (Prefers The Human Rights Party)</p> <p><input type="radio"/> Art Coday (Prefers Republican Party)</p> <p><input type="radio"/> John Orlinski (Prefers Republican Party)</p> <p><input type="radio"/> Charlie R Jackson (Prefers Independent Party)</p> <p><input type="radio"/> Keith Swank (Prefers Republican Party)</p> <p><input type="radio"/> Alex Tsimerman (Prefers StandupAmerica Party)</p> <p><input type="radio"/> RC Smith (Prefers Republican Party)</p> <p><input type="radio"/> Don L. Rivers (Prefers Democratic Party)</p> <p><input type="radio"/> Jennifer Gigi Ferguson (Prefers Independent Party)</p> <p><input type="radio"/> Steve Hoffman (Prefers Freedom Socialist Party)</p> <p><input type="radio"/> George H. Kalberer (Prefers Democratic Party)</p> <p><input type="radio"/> James Robert "Jimmie" Deal (Prefers Green Party)</p> <p><input type="radio"/> Roque "Rocky" De La Fuente (Prefers Republican Party)</p> <p><input type="radio"/> Jon Butler (Prefers Independent Party)</p> <p><input type="radio"/> Dave Bryant (Prefers Republican Party)</p> <p><input type="radio"/> Mohammad Said (Prefers Democratic Party)</p> <p><input type="radio"/> Matt Hawkins (Prefers Republican Party)</p> <p><input type="radio"/> Glen R Stockwell (Prefers Republican Party)</p> <p><input type="radio"/> _____</p>	<p>State Representative Position No. 2</p> <p><input type="radio"/> Jim McEntire (Prefers Republican Party)</p> <p><input type="radio"/> Steve Tharinger (Prefers Democratic Party)</p> <p><input type="radio"/> _____</p>
County - Partisan Offices	
	<p>Assessor</p> <p><input type="radio"/> Jeff Chapman (Prefers Democratic Party)</p> <p><input type="radio"/> _____</p>
	<p>Auditor</p> <p><input type="radio"/> Rose Ann Carroll (Prefers Democratic Party)</p> <p><input type="radio"/> _____</p>
	<p>Clerk</p> <p><input type="radio"/> Ruth Gordon (Prefers Democratic Party)</p> <p><input type="radio"/> _____</p>
	<p>County Commissioner District No. 3</p> <p><input type="radio"/> Greg Brotherton (Prefers Democratic Party)</p> <p><input type="radio"/> Craig Durgan (Prefers Democratic Party)</p> <p><input type="radio"/> Jon Cooke (Prefers Republican Party)</p> <p><input type="radio"/> Ryan McAllister (Prefers Democratic Party)</p> <p><input type="radio"/> _____</p>
	<p>Prosecuting Attorney / Coroner</p> <p><input type="radio"/> James M. Kennedy (Prefers Democratic Party)</p> <p><input type="radio"/> Michael Haas (Prefers Democratic Party)</p> <p><input type="radio"/> _____</p>
	<p>Sheriff</p> <p><input type="radio"/> Joe Nole (Prefers Democratic Party)</p> <p><input type="radio"/> David Stanko (States No Party Preference)</p> <p><input type="radio"/> _____</p>
	<p>Treasurer</p> <p><input type="radio"/> Stacie Prada (Prefers Democratic Party)</p> <p><input type="radio"/> _____</p>
<p>United States Representative District 6</p> <p><input type="radio"/> Tyler Myles Vega (Prefers Progressive Party)</p> <p><input type="radio"/> Douglas Dightman (Prefers Republican Party)</p> <p><input type="radio"/> Derek Kilmer (Prefers Democratic Party)</p> <p><input type="radio"/> _____</p>	
Legislative District 24 - Partisan Offices	
<p>State Representative Position No. 1</p> <p><input type="radio"/> Jodi Wilke (Prefers Republican Party)</p> <p><input type="radio"/> Mike Chapman (Prefers Democratic Party)</p> <p><input type="radio"/> _____</p>	

A B C 1000

Local Measure

Proposition No. 1
Chimacum School District
Capital Improvements,
Including Facilities,
Technology and Safety

The Board of Directors of Chimacum School District No. 49 adopted Resolution No. 2018-1 for capital projects levies. This levy funds the renovation, upgrading and modernization of educational facilities of the District, including technology improvements, and authorizes the following excess levies on all taxable property within the District:

Collection Years	Approximate Levy Rate/\$1,000 Assessed Value	Levy Amount
2019	\$.677	\$1,325,000
2020	\$.664	\$1,325,000
2021	\$.651	\$1,325,000
2022	\$.638	\$1,325,000
2023	\$.626	\$1,325,000
2024	\$.614	\$1,325,000

Should this proposition be approved?

- YES
- NO

For this office only: In order to vote for precinct committee officer, a partisan office, you must affirm that you are a Democrat or a Republican and may vote only for one candidate from the party you select. Your vote for a candidate affirms your affiliation with the same party as the candidate. This preference is private and will not be matched to your name or shared.

Political Party Precinct Committee Officer

Political Party Precinct Committee Officer - Democratic

- Franklin J.C. Wallbrown
"I affirm I am a Democrat" - Prec. 101
- Ann Waldron
"I affirm I am a Democrat" - Prec. 101
- Ben Rutherford
"I affirm I am a Democrat" - Prec. 102
- Ray Hunter
"I affirm I am a Democrat" - Prec. 102
- Thomas Meyer
"I affirm I am a Democrat" - Prec. 103
- Chelsea Pronovost
"I affirm I am a Democrat" - Prec. 103
- Linda Sutton
"I affirm I am a Democrat" - Prec. 104
- Marty Gilmore
"I affirm I am a Democrat" - Prec. 104
- Patricia Jones
"I affirm I am a Democrat" - Prec. 201
- Clayton White
"I affirm I am a Democrat" - Prec. 201
- Beth Stroh-Stern
"I affirm I am a Democrat" - Prec. 204
- Jolene A Elkins
"I affirm I am a Democrat" - Prec. 204
- John W. Hamilton
"I affirm I am a Democrat" - Prec. 301
- Gail Lucas
"I affirm I am a Democrat" - Prec. 301
- Jean Ball
"I affirm I am a Democrat" - Prec. 302
- Maj-Britt Peacock
"I affirm I am a Democrat" - Prec. 302
- Alise Moss Vetica
"I affirm I am a Democrat" - Prec. 304
- Linda J. Brewster
"I affirm I am a Democrat" - Prec. 304
- Jeff Graham
"I affirm I am a Democrat" - Prec. 306
- Nancy Lee Mann
"I affirm I am a Democrat" - Prec. 306
- Bethel Prescott
"I affirm I am a Democrat" - Prec. 306
- Amber Rose
"I affirm I am a Democrat" - Prec. 500
- Linda Karp
"I affirm I am a Democrat" - Prec. 500
- Gerald Lasser
"I affirm I am a Democrat" - Prec. 502
- John Pizzo
"I affirm I am a Democrat" - Prec. 502
- Juliet Parfrey
"I affirm I am a Democrat" - Prec. 505
- John Fabian
"I affirm I am a Democrat" - Prec. 505
- Cynthia Koan
"I affirm I am a Democrat" - Prec. 700
- Tobi McEnerney
"I affirm I am a Democrat" - Prec. 700
- Gary Engbrecht
"I affirm I am a Democrat" - Prec. 702
- Rick Dennison
"I affirm I am a Democrat" - Prec. 702
- Jackie Aase
"I affirm I am a Democrat" - Prec. 703
- Gary B. Larson
"I affirm I am a Democrat" - Prec. 703
- Carol Gallup
"I affirm I am a Democrat" - Prec. 704
- Jonathan S Bakin
"I affirm I am a Democrat" - Prec. 704
- Patricia Walat
"I affirm I am a Democrat" - Prec. 706
- Bruce Cowan
"I affirm I am a Democrat" - Prec. 706
- Bernie Donanberg
"I affirm I am a Democrat" - Prec. 707
- John N. Collins
"I affirm I am a Democrat" - Prec. 707
- Charlotte Wells
"I affirm I am a Democrat" - Prec. 708
- Elizabeth "Libby" Urner Wennstrom
"I affirm I am a Democrat" - Prec. 708
- John Austin
"I affirm I am a Democrat" - Prec. 709
- Nate Malmgren
"I affirm I am a Democrat" - Prec. 709