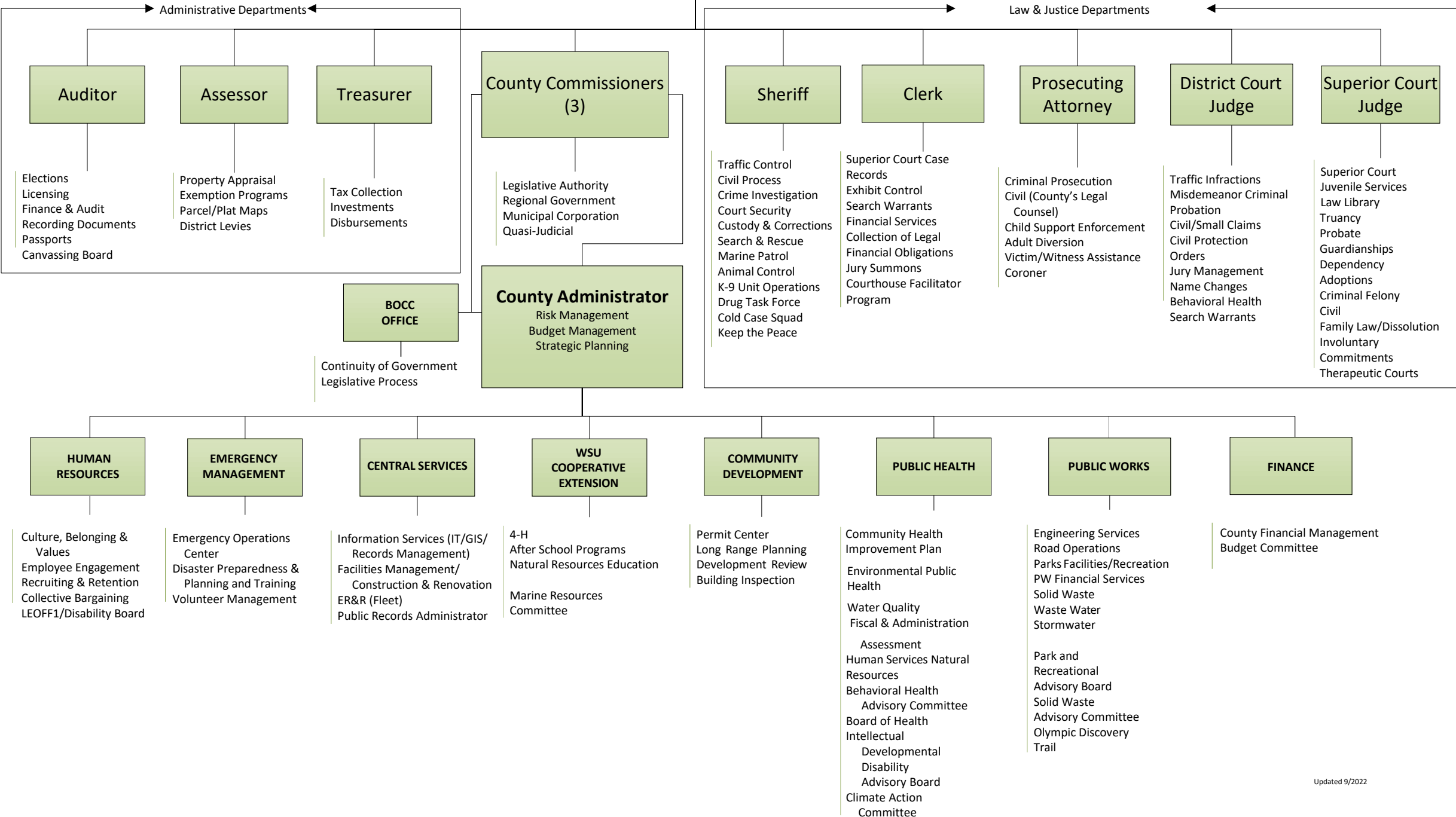


# Jefferson County Electorate



### Additional Advisory Boards to the Board of County Commissioners (BOCC)

- Behavioral Health Consortium
- Chimacum Drainage District
- Empowered Teens Coalition
- Fort Worden Advisory Committee
- Hood Canal Coordinating Council
- JeffCom 911 Administrative Board
- Jefferson Broadband Action Team and Executive Board
- Jefferson County Clean Water District
- Jefferson-Peninsula Regional Emergency Planning Committee
- Jefferson Transit Authority Finance Committee
- Mental Health Field Response Team
- National Association of Counties
- North Olympic Development Council
- North Olympic Legislative Alliance
- Olympic Area Agency on Aging
- Olympic Coast National Marine Sanctuary Advisory Board
- Olympic Community Action Program
- Olympic Consortium Board
- Olympic Region Clean Air Agency
- Open Space & Conservation futures Advisory Board
- Peninsula Regional Transportation Planning Organization
- Port Ludlow Village Council
- Puget Sound Partnership-Strait Action Area
- Salish Behavioral Health Administrative Services Organization
- Tourism Coordinating Council

### Additions to the BOCC Office

- Board of Equalization
- Civil Service
- Economic Development Council
- Elected Officials/Department Directors Quarterly Workshop
- Housing Fund Board
- Intergovernmental Collaborative Group
- Lodging Tax Advisory Committee
- Veteran Program
- Public Infrastructure Committee
- Provides Guidance for all Boards