

SAMPLE Ballot - Jefferson County, WA General Election Tuesday, November 8, 2022

3601 Port Ludlow I

Instructions

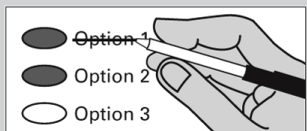
How to vote



Use a dark blue or black ink pen to completely fill in the oval to the left of your choice.

Vote for one in each race. If you vote for more than one, no votes will be counted for that race.

If you make a mistake



Draw a line through the entire measure response or candidate's name.

Then you may make another choice.

Optional Write-in



To vote for a candidate not listed for that race, fill in the oval to the left of the line and print the name of the candidate.

For a list of the people and organizations that donated to state and local candidates and ballot measure campaigns, visit www.pdc.wa.gov

↓ START VOTING HERE

Advisory Votes

Advisory Vote No. 39 Engrossed Substitute Senate Bill 5974

The legislature increased, without a vote of the people, the tax on aircraft fuel from 11 cents to 18 cents per gallon, costing \$14 million in its first ten years, for government spending.

This tax increase should be:

- Repealed
- Maintained

Advisory Vote No. 40 Engrossed Substitute House Bill 2076

The legislature imposed, without a vote of the people, premiums on "transportation network companies" to provide workers compensation to their drivers, costing an indeterminate amount in its first ten years, for government spending.

This tax increase should be:

- Repealed
- Maintained

If a primary election was held for an office, the two candidates who received the most votes in the Primary advanced to the General Election.

READ: Each candidate for partisan office may state a political party that he or she prefers. A candidate's preference does not imply that the candidate is nominated or endorsed by the party, or that the party approves of or associates with that candidate.

Federal - Partisan Offices

United States Senator

- Patty Murray (Prefers Democratic Party)
- Tiffany Smiley (Prefers Republican Party)
- Write-in

United States Representative District 6

- Derek Kilmer (Prefers Democratic Party)
- Elizabeth Kreiselmaier (Prefers Republican Party)
- Write-in

State - Partisan Office

Secretary of State 2-Year Unexpired Term

- Steve Hobbs (Prefers Democratic Party)
- Julie Anderson (Prefers Nonpartisan Party)
- Write-in

Legislative District 24 - Partisan Offices

State Representative Position No. 1

- Mike Chapman (Prefers Democratic Party)
- Sue Forde (Prefers Republican Party)
- Write-in

State Representative Position No. 2

- Steve Tharinger (Prefers Democratic Party)
- Brian Pruiett (Prefers Republican Party)
- Write-in

County - Partisan Offices

Assessor

- Jeff Chapman (Prefers Democratic Party)
- Write-in

Auditor

- Brenda Huntingford (States No Party Preference)
- Write-in

Clerk

- Amanda Hamilton (Prefers Democratic Party)
- Write-in

County Commissioner District No. 3

- Greg Brotherton (Prefers Democrat Party)
- Marcia Kelbon (Prefers Republican Party)
- Write-in

Prosecuting Attorney / Coroner

- James M. Kennedy (Prefers Democratic Party)
- Write-in

VOTE BOTH SIDES

Special Note: This is an "EXAMPLE" of your ballot.

The ballot you receive will have the candidates and/or measures based on your residence address.

County - Partisan Offices	Local Measure
Sheriff <input type="radio"/> Joe Nole (Prefers Democratic Party) <input type="radio"/> Art Frank (Prefers Democratic Party) <input type="radio"/> Write-in	JEFFERSON COUNTY PROPOSITION NO. 1 Merger of Port Ludlow Fire & Rescue and East Jefferson Fire Rescue Resolution No. 22-01 of the Jefferson County Fire Protection District No. 3, DBA Port Ludlow Fire & Rescue authorizes a merger into Jefferson County Fire Protection District No. 1, dba East Jefferson Fire Rescue effective January 1, 2023. Should this resolution be: <input type="radio"/> APPROVED? <input type="radio"/> REJECTED?
Treasurer <input type="radio"/> Stacie Prada (Prefers Democratic Party) <input type="radio"/> Write-in	
Judicial - Nonpartisan Offices	
State Supreme Court Justice Position No. 1 <input type="radio"/> Mary I. Yu <input type="radio"/> Write-in	
State Supreme Court Justice Position No. 5 <input type="radio"/> Barbara Madsen <input type="radio"/> Write-in	
State Supreme Court Justice Position No. 6 <input type="radio"/> G. Helen Whitener <input type="radio"/> Write-in	
Court of Appeals Division 2, District 2 Position No. 1 <input type="radio"/> Erik D. Price <input type="radio"/> Write-in	
District Court Judge Position No. 1 <input type="radio"/> Mindy Walker <input type="radio"/> Write-in	
Local - Nonpartisan Office	
Public Utility District No.1 Commissioner District No. 1 <input type="radio"/> Jeff Randall <input type="radio"/> Write-in	

VOTE BOTH SIDES

Special Note: This is an "EXAMPLE" of your ballot.

The ballot you receive will have the candidates and/or measures based on your residence address.