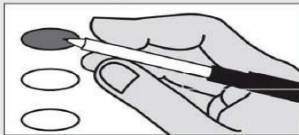


**SAMPLE Ballot - Jefferson County,  
WA Special Election  
Tuesday, April 26, 2022**

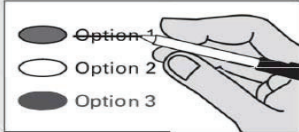
**i Instructions**

**Marking Your Ballot**



Fill in the oval to the left of your choice with a dark pen. Vote for one. If you vote for more than one, that race or measure will not be counted. To vote for a candidate not on the ballot, print the name on the line and fill in the oval to the left.

**Making A Correction**



If you make a mistake, draw a line through the entire candidate's name or response. To vote for another candidate or response, fill in the oval to the left of your new selection.

**Additional Information**

Sign and date the voter's declaration on the return envelope.  
For a replacement ballot, contact the Jefferson County Auditor's Office at (360) 385-9119. Deposit your ballot in a ballot drop box no later than 8:00 p.m. Election Day or mail. It must be postmarked on or before Election Day.  
For a list of the people and organizations that donated to state and local candidates and ballot measure campaigns, visit [www.pdc.wa.gov](http://www.pdc.wa.gov).

**Local Measure**

PROPOSITION NO. 1

QUILCENE SCHOOL DISTRICT NO. 48

BONDS TO CONSTRUCT SCHOOL FACILITIES AND IMPROVE ATHLETIC FACILITIES AND FIELDS

The Board of Directors of Quilcene School District No. 48 adopted Resolution No. 4: 2021-2022, concerning a proposition to improve educational opportunities and outdated school facilities. This proposition would authorize the District to: construct a new grade school building to replace the existing Quilcene Grade School building; construct a new Career and Technical Education Building; make athletic facilities and field improvements; issue no more than \$12,300,000 of general obligation bonds maturing within 25 years; and levy annual excess property taxes to repay the bonds, all as provided in Resolution No. 4: 2021-2022. Should this proposition be:

- Approved
- Rejected

This is an "EXAMPLE" of your ballot.