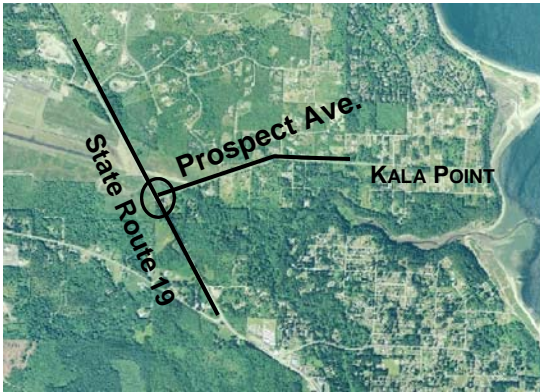


PROSPECT AVE RIGHT TURN LANE COMPLETED



PROJECT LOCATION

Public Works announces completion of the Prospect Avenue right turn lane located at the intersection with State Route (SR) 19.

The project is intended to provide a low-cost means of interim congestion relief at this busy intersection. By providing a dedicated lane for the right-turning movement (representing about half the total traffic), delays are reduced. Relocation of utilities and the 'Kala Point' sign and associated landscaping were also part of the project.

Public Works continues to work with the State Department of Transportation on corridor planning efforts to develop support and funding for improvements to the major intersections along SR-19 including at this location.

The project was funded with local Road Funds and was constructed by Lakeside Industries. The Port of Port Townsend donated the right-of-way necessary for the project.

