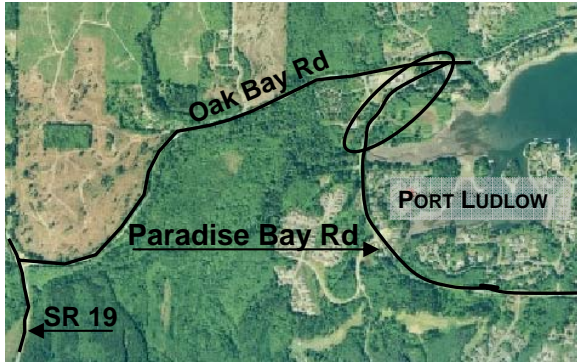


PARADISE BAY ROAD ILLUMINATION PROJECT



PROJECT LOCATION

Public Works announces completion of the Paradise Bay Road Illumination project.

This project marks the culmination of the Paradise Bay Road Improvement Project, which received the **American Public Works Association's "Best Transportation Project" award in 2007** (for projects under \$2 million - nationwide).

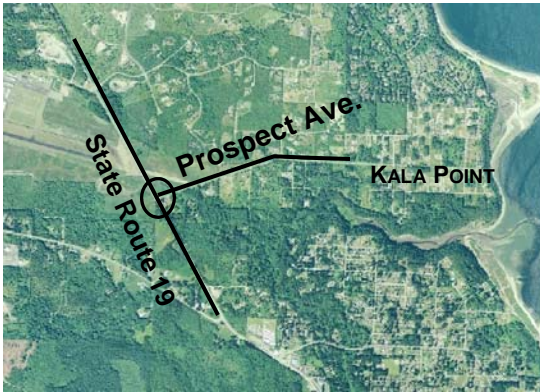
The overall road project balanced multiple objectives which included reconstructing an aging pavement surface, providing wider paved shoulders, "calming" traffic, enhancing pedestrian amenities to work with existing trails and projected development, and incorporating landscaping to complement the Port Ludlow character.

Although each project setting is unique, the new segment of Paradise Bay Road serves as a model of what can be created in our public spaces given sufficient funding and local support.

The project was funded through a combination of local Road Funds and a State grant obtained through the Rural Arterial Program (RAP). Road improvements were constructed by Seton Construction and lighting was installed by the Olympic Electric Company.



PROSPECT AVE RIGHT TURN LANE COMPLETED



PROJECT LOCATION

Public Works announces completion of the Prospect Avenue right turn lane located at the intersection with State Route (SR) 19.

The project is intended to provide a low-cost means of interim congestion relief at this busy intersection. By providing a dedicated lane for the right-turning movement (representing about half the total traffic), delays are reduced. Relocation of utilities and the 'Kala Point' sign and associated landscaping were also part of the project.

Public Works continues to work with the State Department of Transportation on corridor planning efforts to develop support and funding for improvements to the major intersections along SR-19 including at this location.

The project was funded with local Road Funds and was constructed by Lakeside Industries. The Port of Port Townsend donated the right-of-way necessary for the project.

