

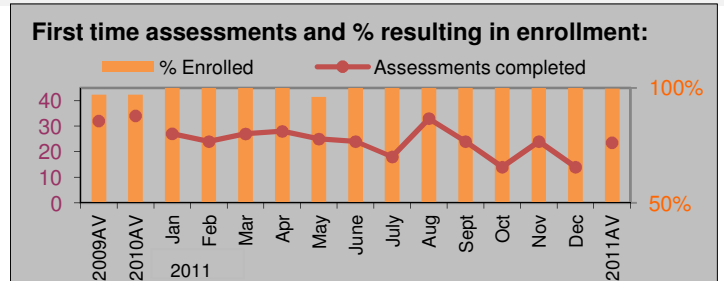
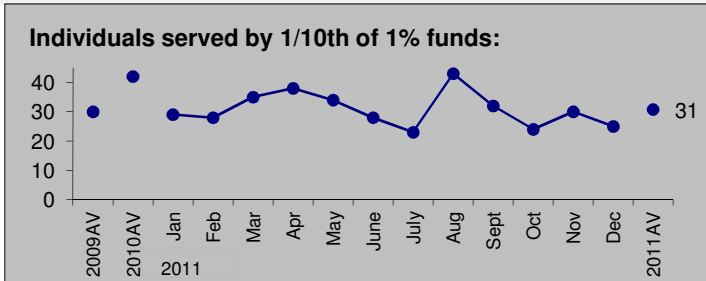
# Jefferson County 1/10th of 1% for Mental Health & Substance Abuse

## Evaluation Data: Jefferson County Jail

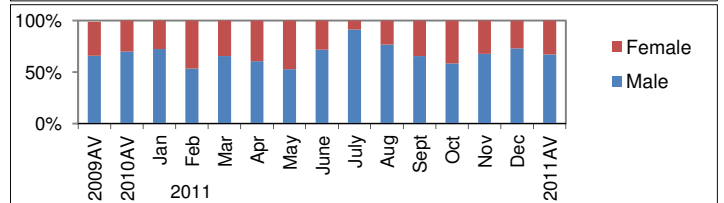
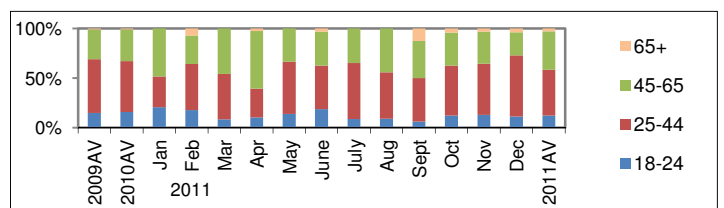
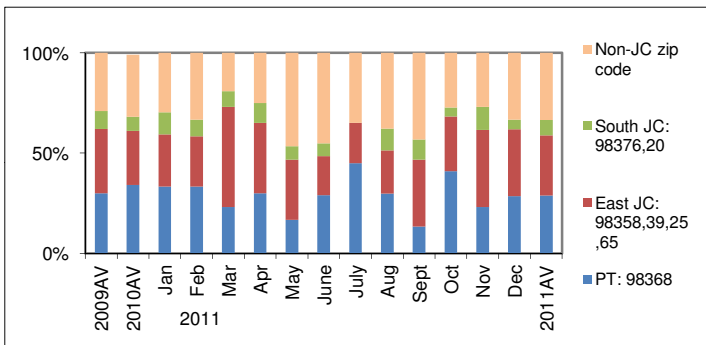
Funding: 2011 Actual: \$34,856 2010 Actual: \$26,142 2009 Actual: \$24,907 2008 Actual: \$36,352

### Program Description:

One registered nurse assesses a majority of subjects booked into the jail for substance abuse and/or withdrawal, mania, anorexia, mood disorders, self harm and other mental health conditions. Nurse actively recruits substance abuse inmates for participation in Relapse Prevention Education (RPE) and co-facilitates two weekly RPE classes. Nurse directly provides assessment, early intervention, and follow-up for inmates suffering from substance dependencies and/or mental health issues, including education and public health interventions. Nurse makes frequent referrals to Jefferson Mental Health and the Jail Medical Provider, coordinates the continuum of care with Safe Harbor and Drug Court, and assists with placement of inmates into inpatient and outpatient treatment programs. Note: October 2011 data are for 10/16-10/31 only.



### Total individuals served by 1/10th of 1% funds by zip code of residence, age group, and gender:

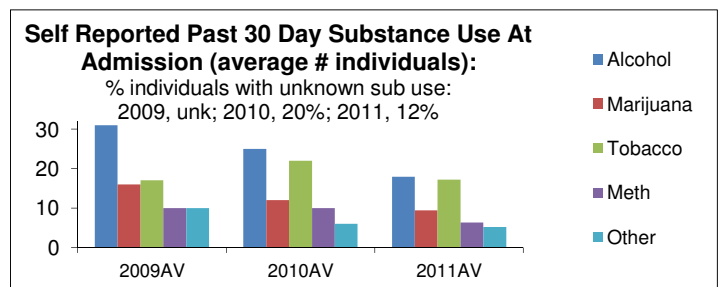
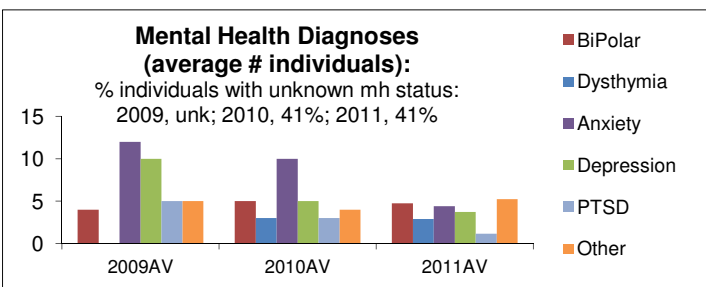
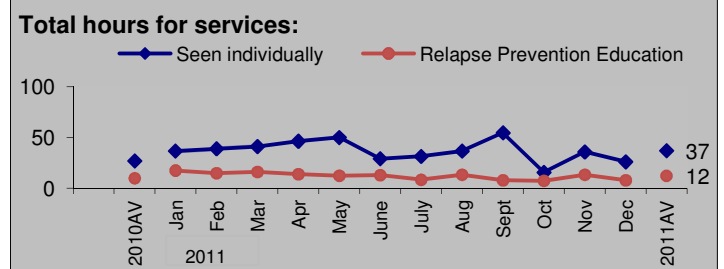
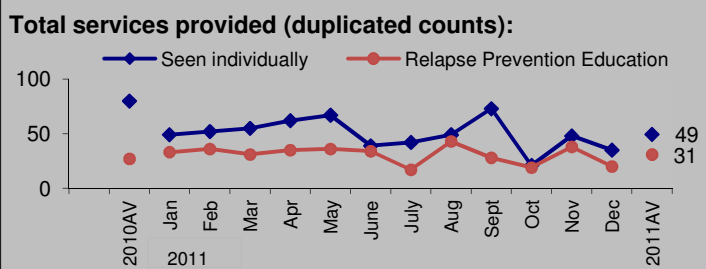


### Referrals to community services/agencies provided to clients (average # per month):

	Total	Dental	Hospital	MH outpt	Medical	Public Hlth
2009AV	38	2	2	5	28	1
2010AV	52	3	2	16	29	1
2011AV	37	0	1	16	20	0

### Individuals previously in jail (average % per month):

2009AV	65%
2010AV	75%
2011AV	74%

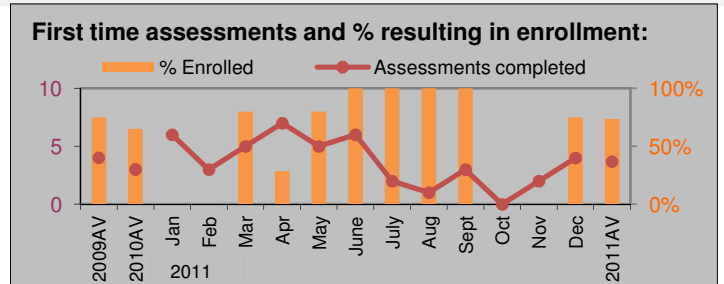
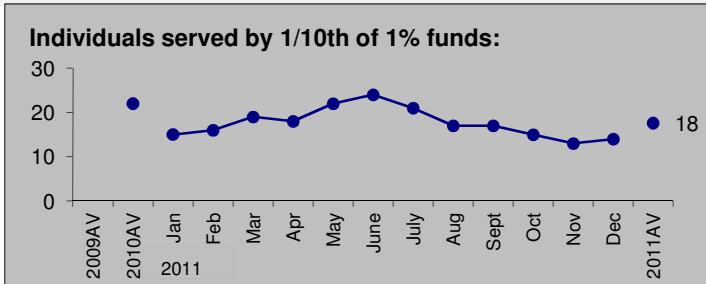


# Jefferson County 1/10th of 1% for Mental Health & Substance Abuse

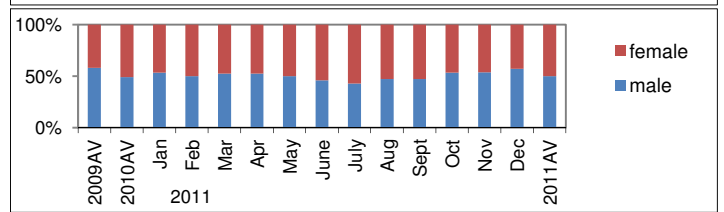
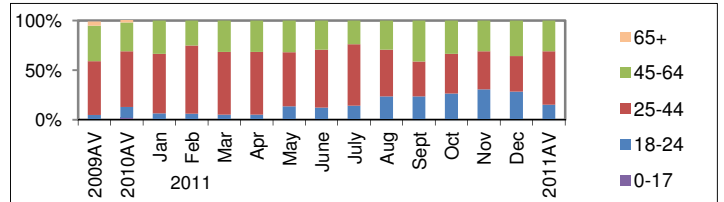
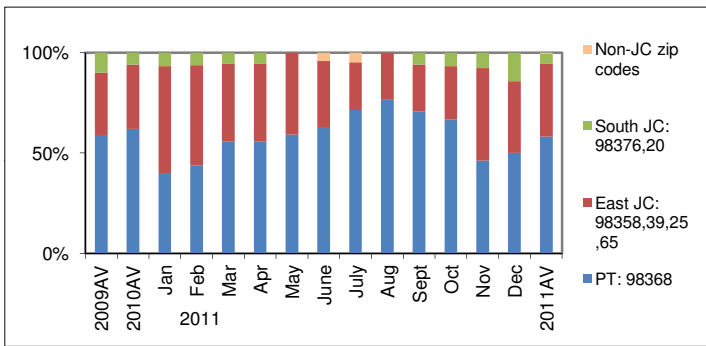
## Evaluation Data: Jefferson Mental Health Services, CODIT Program

Funding: 2011 Actual: \$104,692 2010 Actual: \$97,528 2009 Actual: \$103,993 2008 Actual: \$131,499

**Program Description:** Our CODIT program, run in concert with Safe Harbor, provides direct individual and group services to clients with both Substance Abuse/Dependence and Mental Health Disorders. These services, along with access to medical specialists, a case manager and peer counselor, experienced in serving this population, provide a broad spectrum of treatment possibilities not otherwise available in this county.

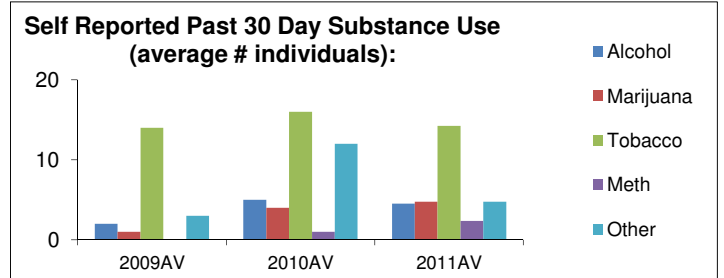
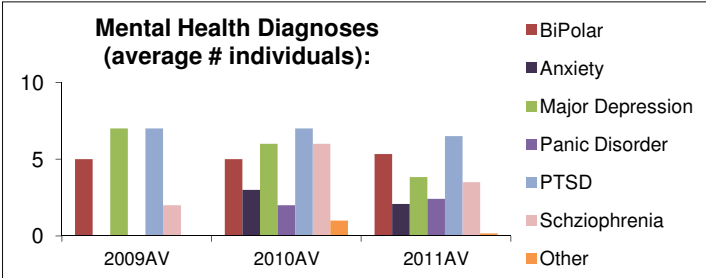
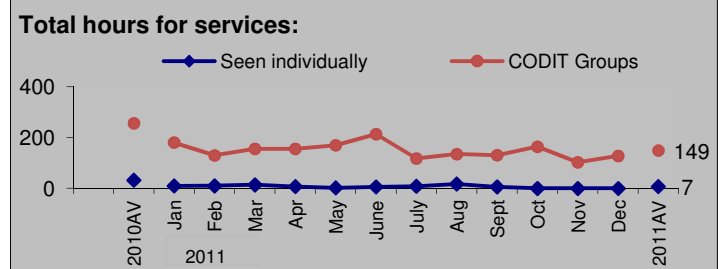
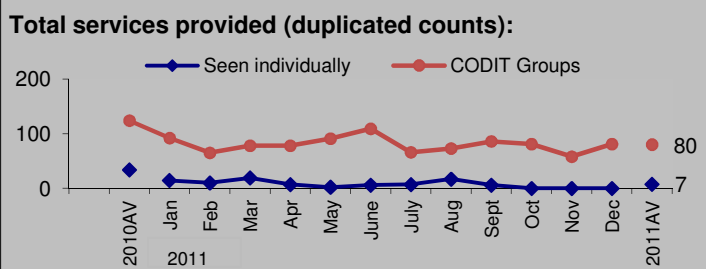


### Total individuals served by 1/10th of 1% funds by zip code of residence, age group, and gender:



### Referrals to community services/agencies provided to clients (average # per month):

	Total	CD-Inpt	DSHS	Education	Employmt	Medical	Quitline	Other
2009AV	18	1	2	1	1	3	not recorded	7
2010AV	38	2	6	1	2	4	11	7
2011AV	44	2	4	4	3	5	13	15



# Jefferson County 1/10th of 1% for Mental Health & Substance Abuse

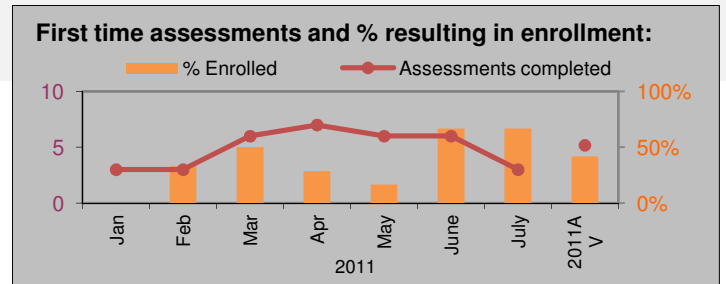
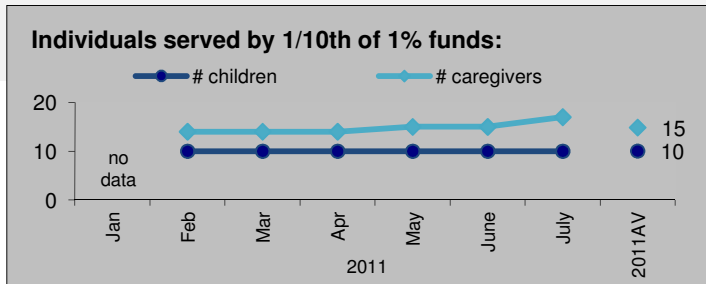
## Evaluation Data: Jumping Mouse Children's Center

Funding: 2011 Actual: \$20,000

### Program Description:

This funding provides services to traumatized children whose care is otherwise uncompensated, specifically to those who have been directly impacted by a parent's substance abuse and/or mental illness. With these funds, we are reaching some of the most at-risk members of our community, preventing substance abuse and mental health problems before they begin.

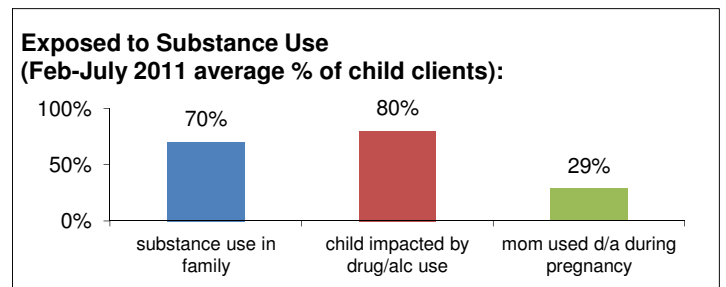
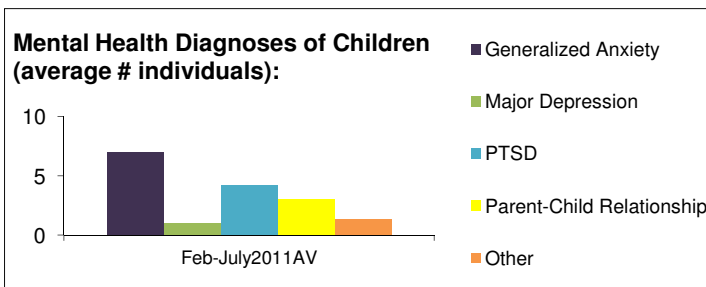
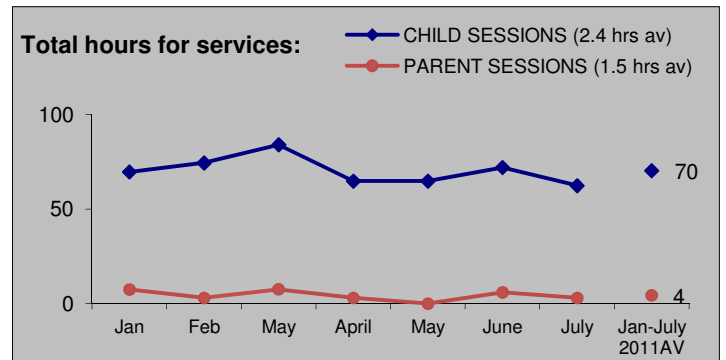
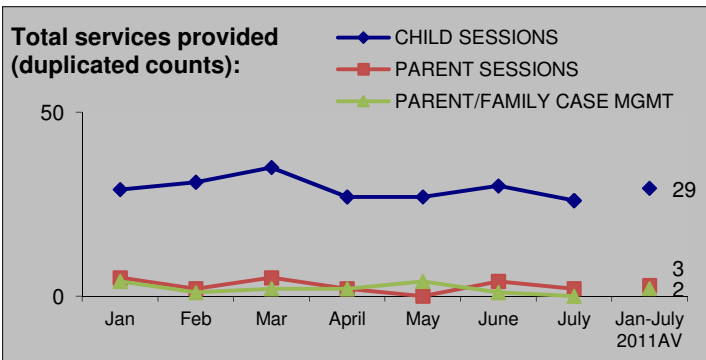
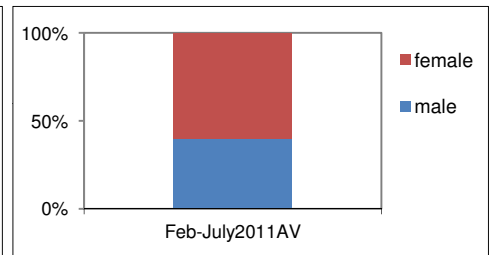
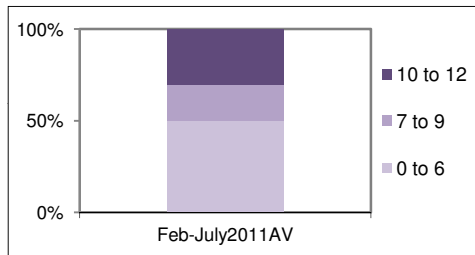
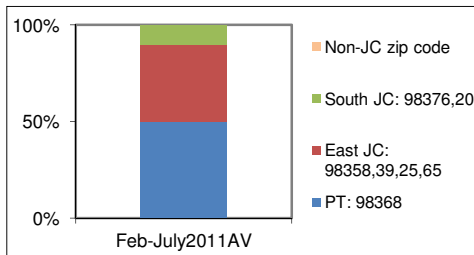
Data are reported only through July, 2011 when the 1/10th of 1% funds were exhausted.



On average, 72% of cost per client is not covered by insurance (Feb-July 2011)

On average, 1/10th of 1% funds cover only 32% of eligible clients (June-July 2011). Data represent funded clients only.

### Total individuals served by 1/10th of 1% funds by zip code of residence, age group, and gender:

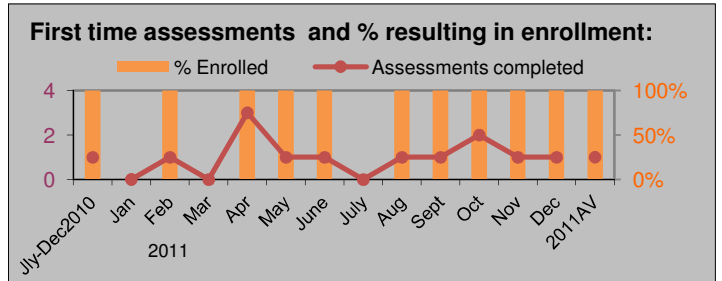
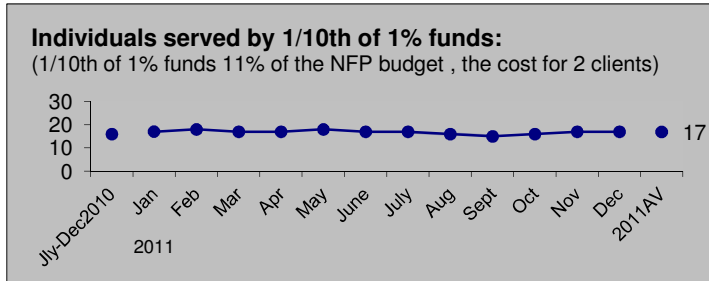


# Jefferson County 1/10th of 1% for Mental Health & Substance Abuse

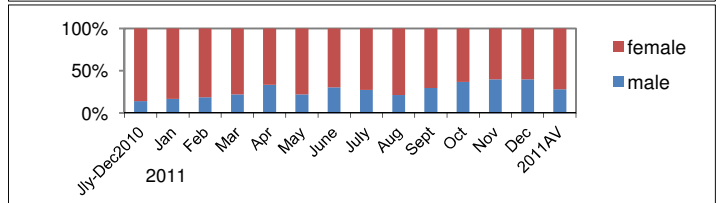
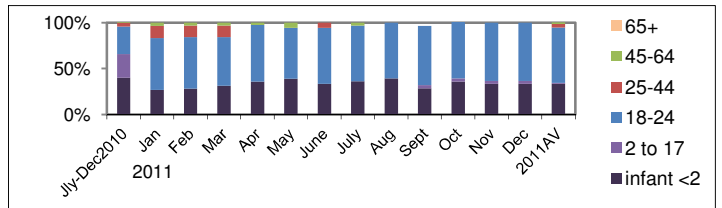
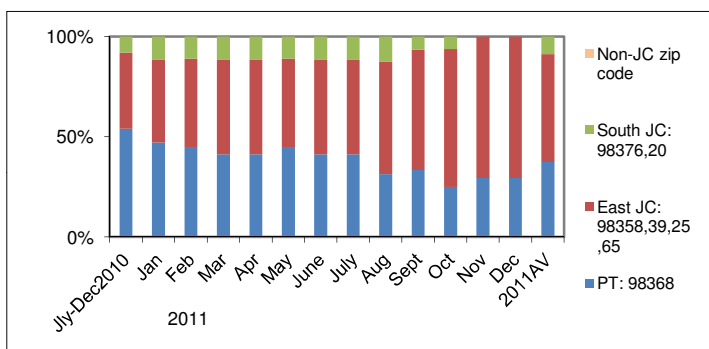
## Evaluation Data: Nurse Family Partnership, Jefferson County Public Health

Funding: 2011 Actual: \$40,000 2010 Actual: \$40,000

**Program Description:** Provide treatment for patients with mental illness, behavioral problems, and prevent future addiction in young children exposed to parental/family substance abuse and/or mental illness. Serves low-income first time pregnant mothers with social/health indicators that will increase the risk of poor outcomes for mother and infant. JCPH data indicate the majority of participants either have a recent personal history of substance use and/or mental illness or these risks currently or historically in the immediate family environment. The nurse treats the mother using behavior change theory and motivational interviewing for quitting substances, preventing relapse, treating mental illness, and addressing intergenerational patterns within the family system. NFP is an evidence based prevention program and JCPH collects extensive data to be confident in the quality and fidelity of services thus assuring the community that Jefferson County families will have similar positive, long term outcomes as seen in the research trials.

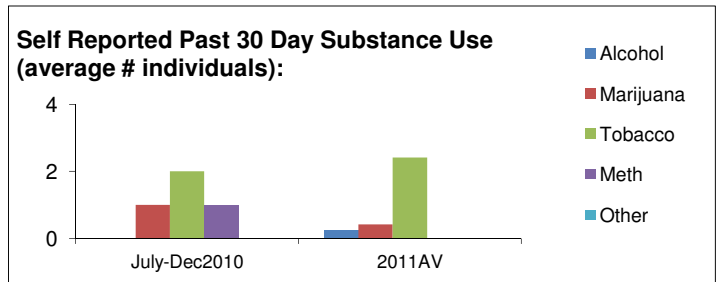
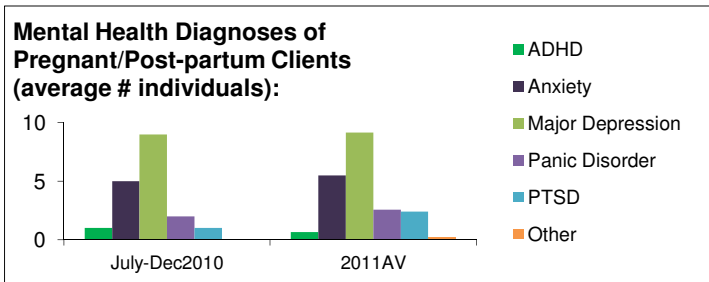
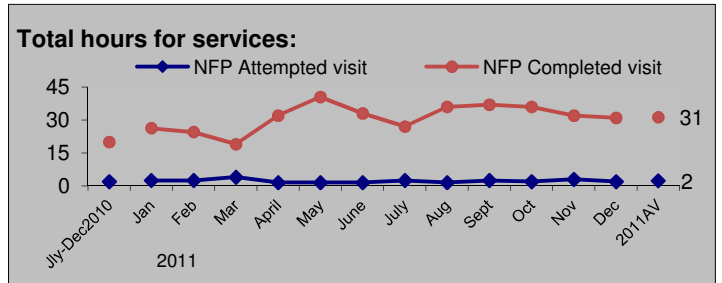
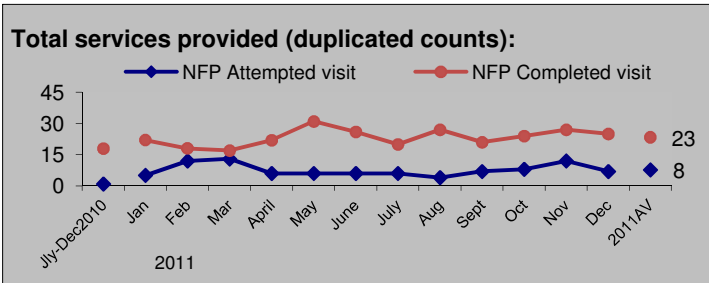


**Total individuals served by 1/10th of 1% funds by zip code of residence, age group, and gender:** (age & gender of all persons at appts)



**Referrals to community services/agencies provided to clients (average # per month):**

	Total	Child Care	DSHS	DV	Housing	Medical	MH Outpt	Quitline	Transpr	Other
July-Dec2010	8	1	0	0	0	3	0	0	0	1
Jan-Dec2011	12	1	1	<1	1	2	1	<1	1	3

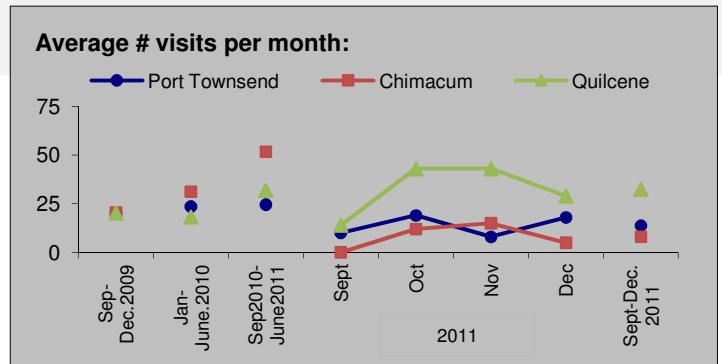
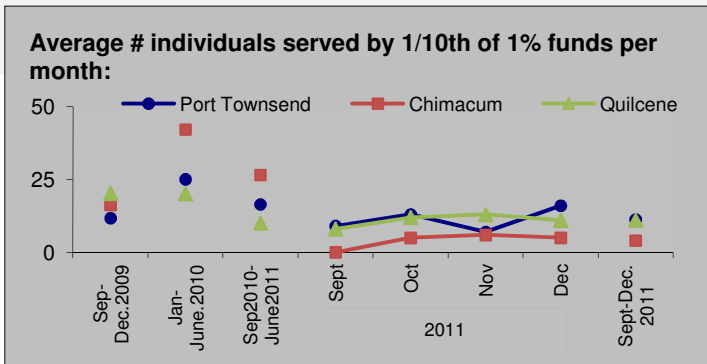


# Jefferson County 1/10th of 1% for Mental Health & Substance Abuse

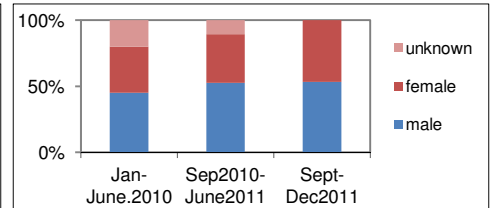
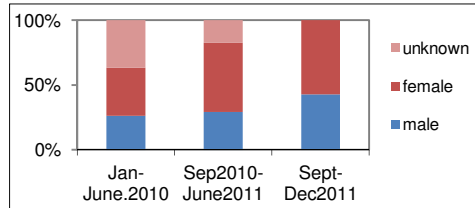
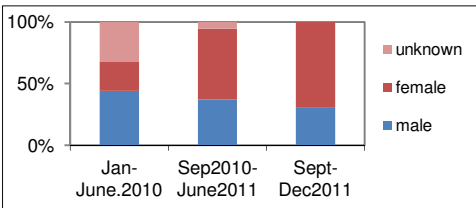
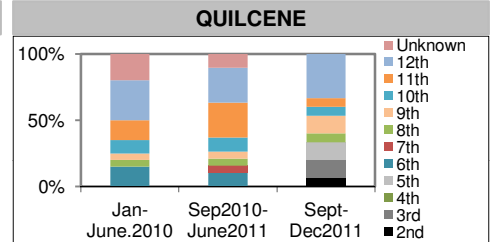
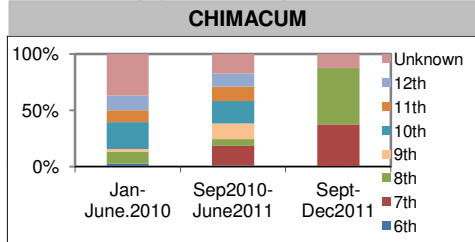
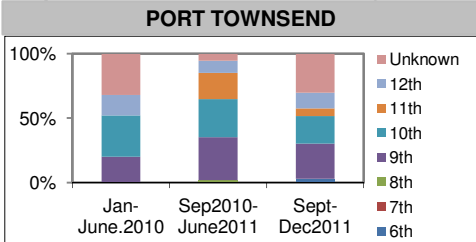
## Evaluation Data: School Based Health Clinic, Jefferson Mental Health Services

Funding: 2011 Actual: \$59,750 2010 Actual: \$57,750 2009 Actual: \$57,750 2008 Actual: \$9,384

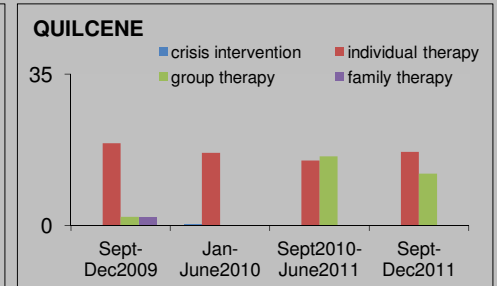
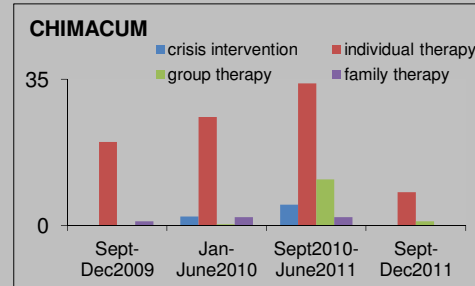
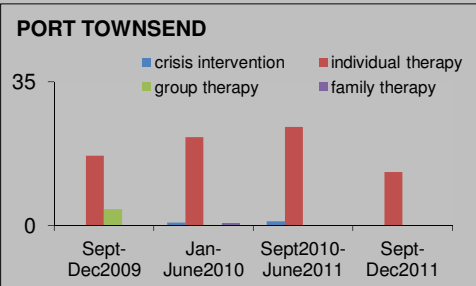
**Program Description:** JMHS funds three mental health professionals to provide direct service on site to students and their families in the Port Townsend, Chimacum, and Quilcene School Districts. Consultations with school staff and other agencies are also provided for the students engaged in the program. Easy access to experienced professionals with no financial burden to the family is the intention and has proven its worth in high levels of



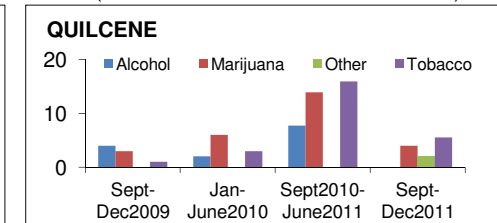
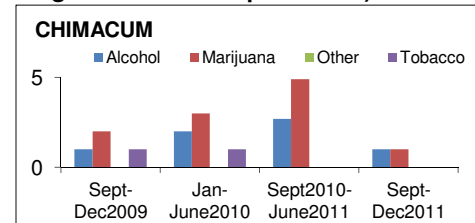
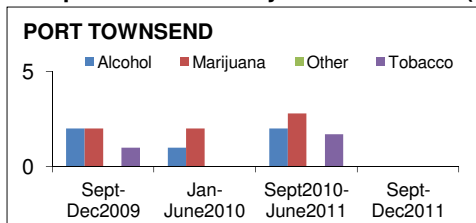
### Unduplicated individuals served by 1/10th of 1% funds by grade and gender:



### Average # services provided per month:



### Self Reported Past 30 Day Substance Use (Average # individuals per month):



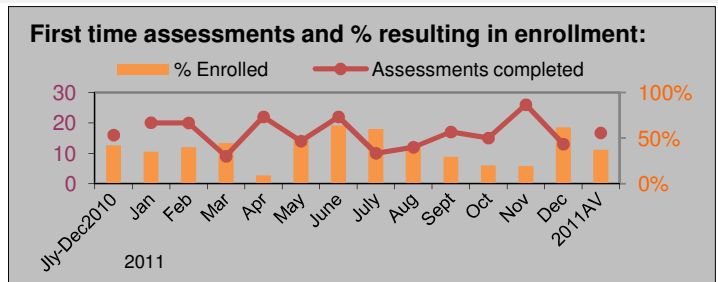
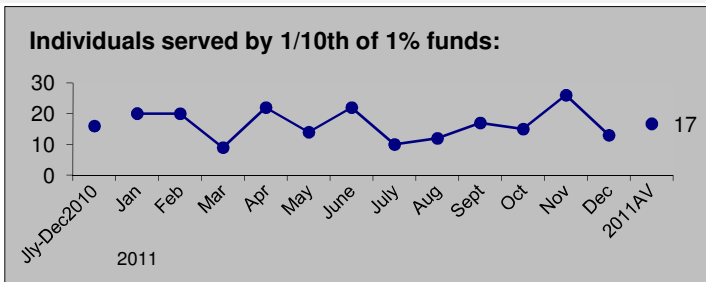
# Jefferson County 1/10th of 1% for Mental Health & Substance Abuse

## Evaluation Data: Safe Harbor and Beacon of Hope, Inc., Intake Support

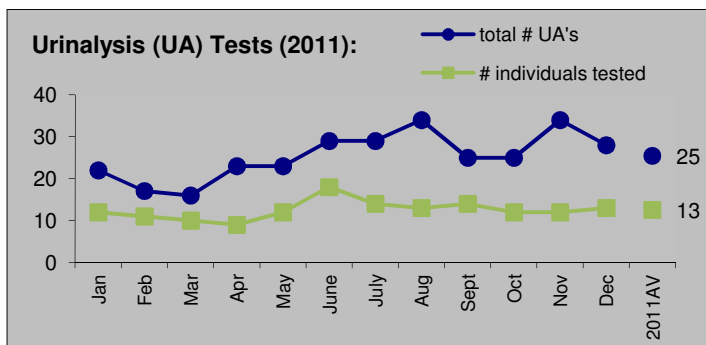
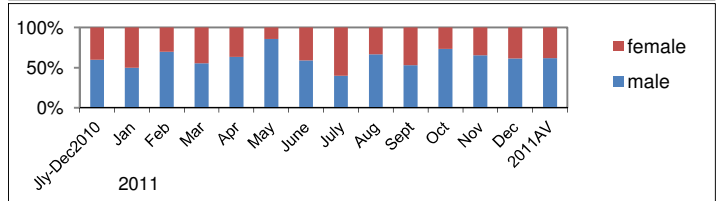
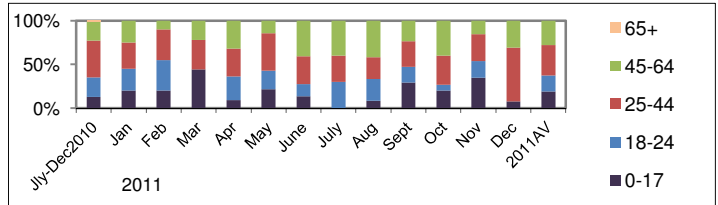
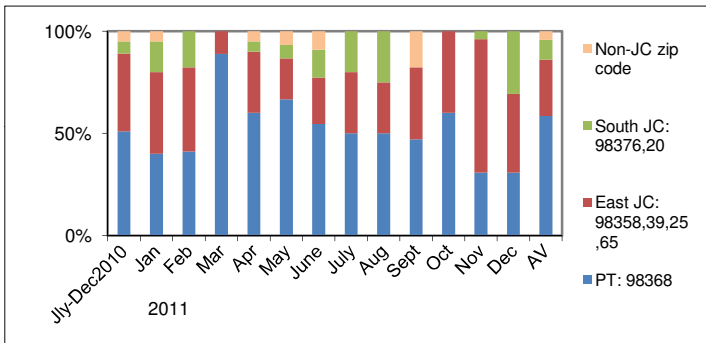
Note: Funding and program description in next rows represent all 1/10th 1% funded Safe Harbor programs.

**Funding:** 2011 Actual: \$120,456 2010 Actual: \$118,958 2009 Actual: \$107,987 2008 Actual: \$73,992

**Program Description:** Full time Chemical Dependency Counselor provided for the CODIT program. Counselor provides assessments, treatment, individuals, treatment planning, staffing's, and reviews. Two Relapse Prevention Education groups per week at Jefferson County Jail facilitated by CDP/CDPT from Safe Harbor. Drug and Alcohol assessments for individuals in the community as well as individuals currently incarcerated at Jefferson County Jail. Participation in District, Family Therapeutic, Topside (youth) and Drug Court. Data entry into the WA State Division of Behavioral Health and Recovery database of all assessments, admits, treatment participation (including groups, individuals, urinalysis), and discharges. Data entry is required by the State to be in compliance with state contracts. A portion of the funds are also used for CODIT program office supplies. Treatment for Jefferson County residents with no other means of paying for their treatment.



### Total individuals served by 1/10th of 1% funds by zip code of residence, age group, and gender:



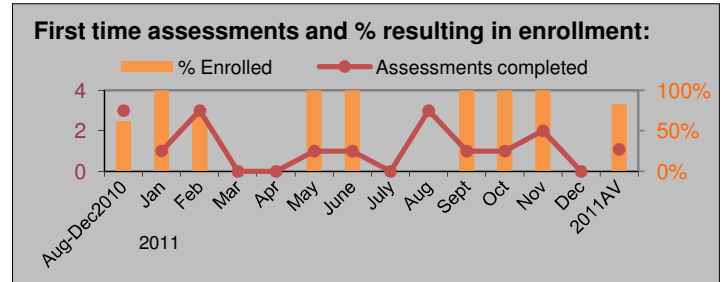
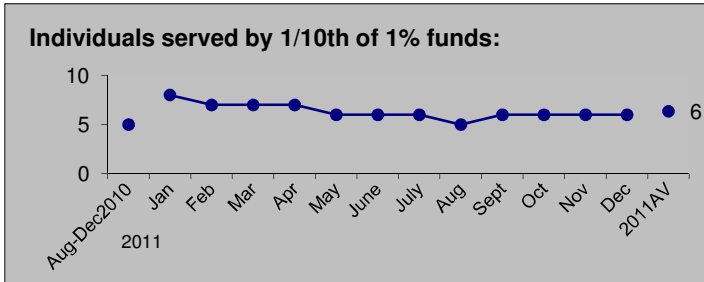
# Jefferson County 1/10th of 1% for Mental Health & Substance Abuse

## Evaluation Data: Topside, Youth Therapeutic Court

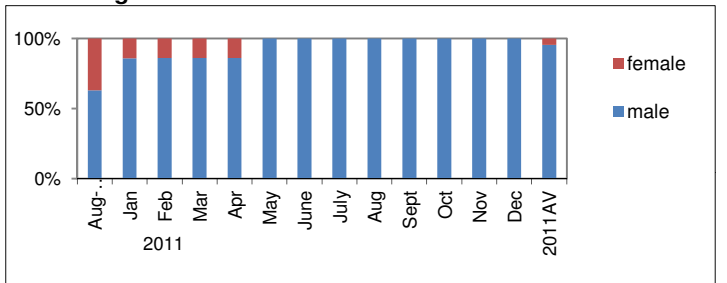
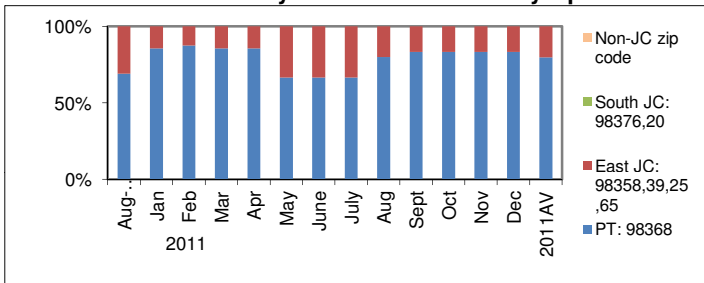
Funding: 2011 Actual: \$19,650 2010 Actual: \$8,281 2009 Actual: \$1,754

### Program Description:

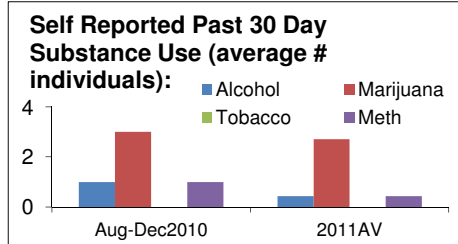
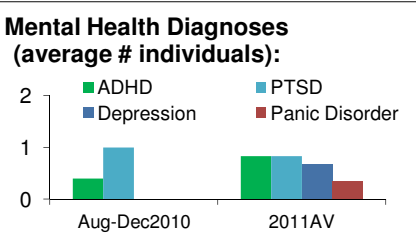
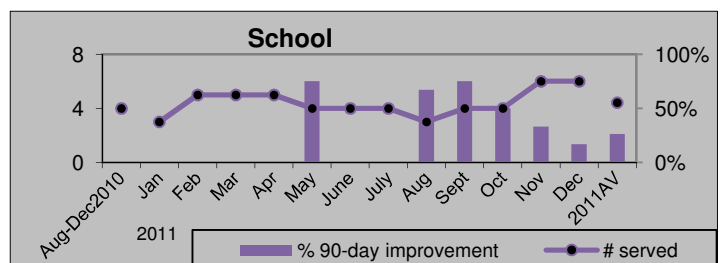
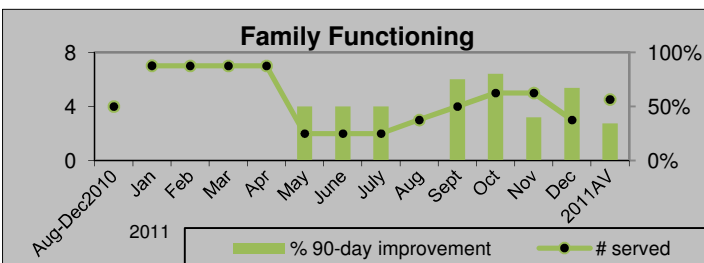
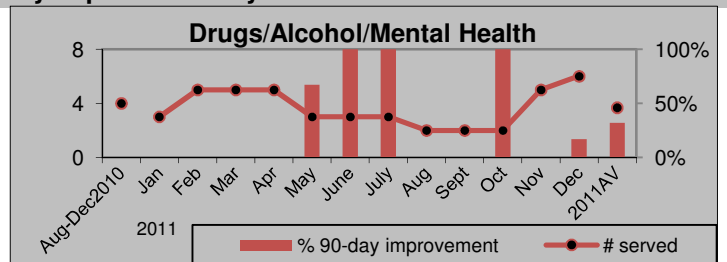
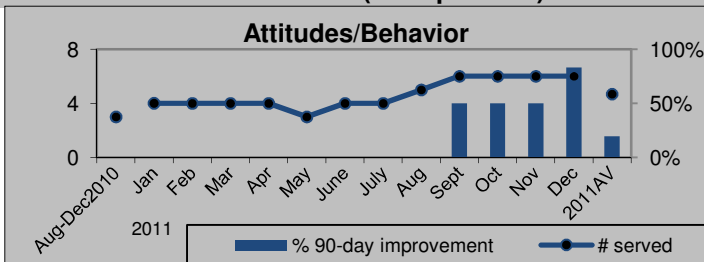
The Topside Program is an alternative therapeutic court intervention for youth involved in the juvenile justice system. A youth referred to this program is one who has been identified as a moderate/high risk youth with significant risk factors in two or more of the following domains: Chemical dependency; mental health, school, and/or family functioning. The theory is that providing a treatment court setting for referred youth will assist in fostering a direct relationship between the Court, the parents and the youth and better motivate them to fully engage in evidence-based interventions and other programs in an effort to reduce identified risk factors while supporting the strengths of the youth and family. Data reporting began in August 2010.



### Total individuals served by 1/10th of 1% funds by zip code of residence and gender:



### Number of individuals served (unduplicated) and % with 90-day improvement by domain:



	Total	CD inpatient	CD outpatient	Dove House
Aug-Dec 2010	4	1	1	1
Jan-Dec 2011	5	1	4	<1