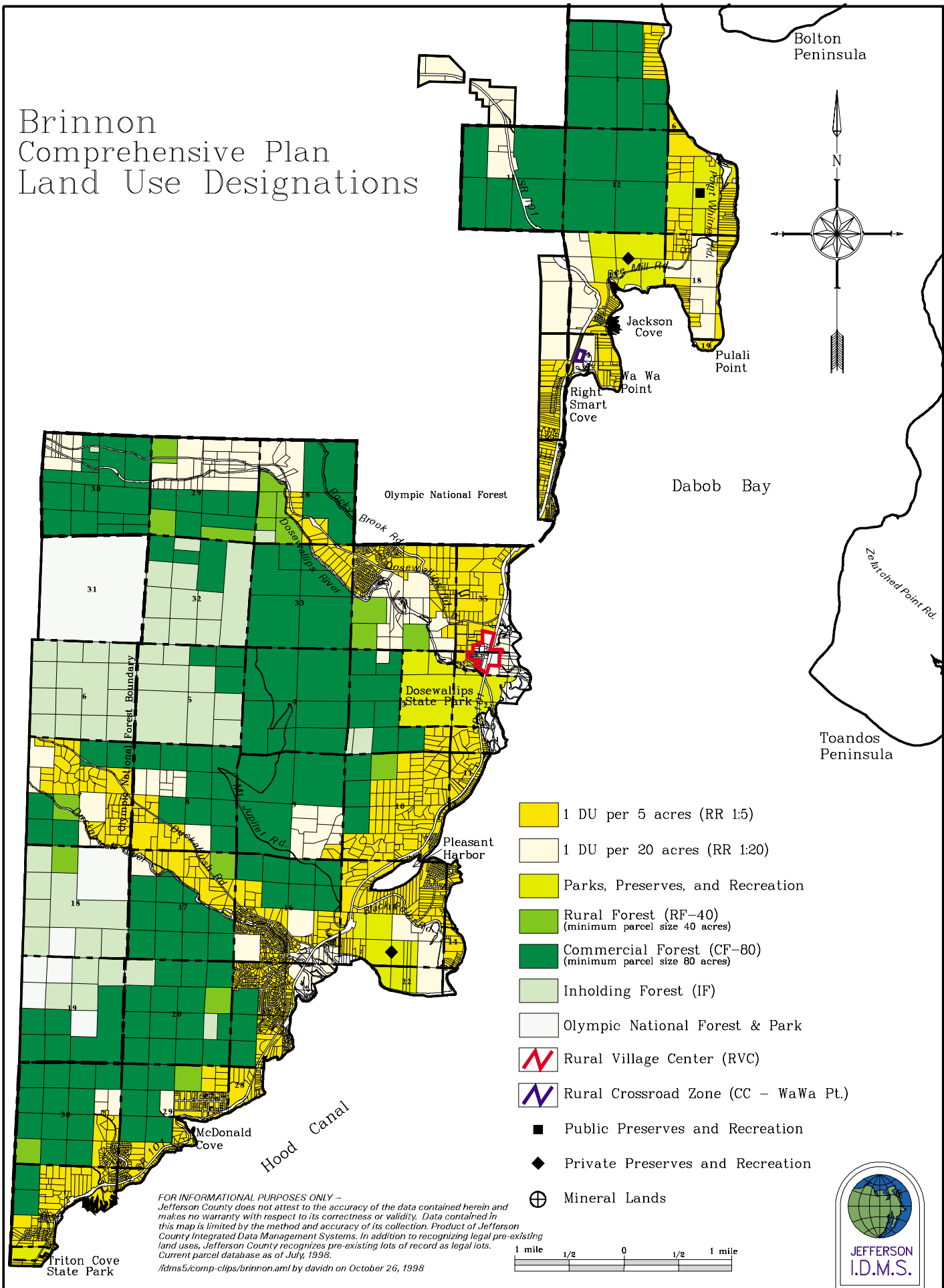


Brinnon Comprehensive Plan Land Use Designations



FOR INFORMATIONAL PURPOSES ONLY –
 Jefferson County does not attest to the accuracy of the data contained herein and makes no warranty with respect to its correctness or validity. Data contained in this map is limited by the method and accuracy of its collection. Product of Jefferson County Integrated Data Management Systems. In addition to recognizing legal pre-existing land uses, Jefferson County recognizes pre-existing lots of record as legal lots. Current parcel database as of July, 1998.
 //idms5/comp-clips/brinnon.aml by davidn on October 26, 1998

