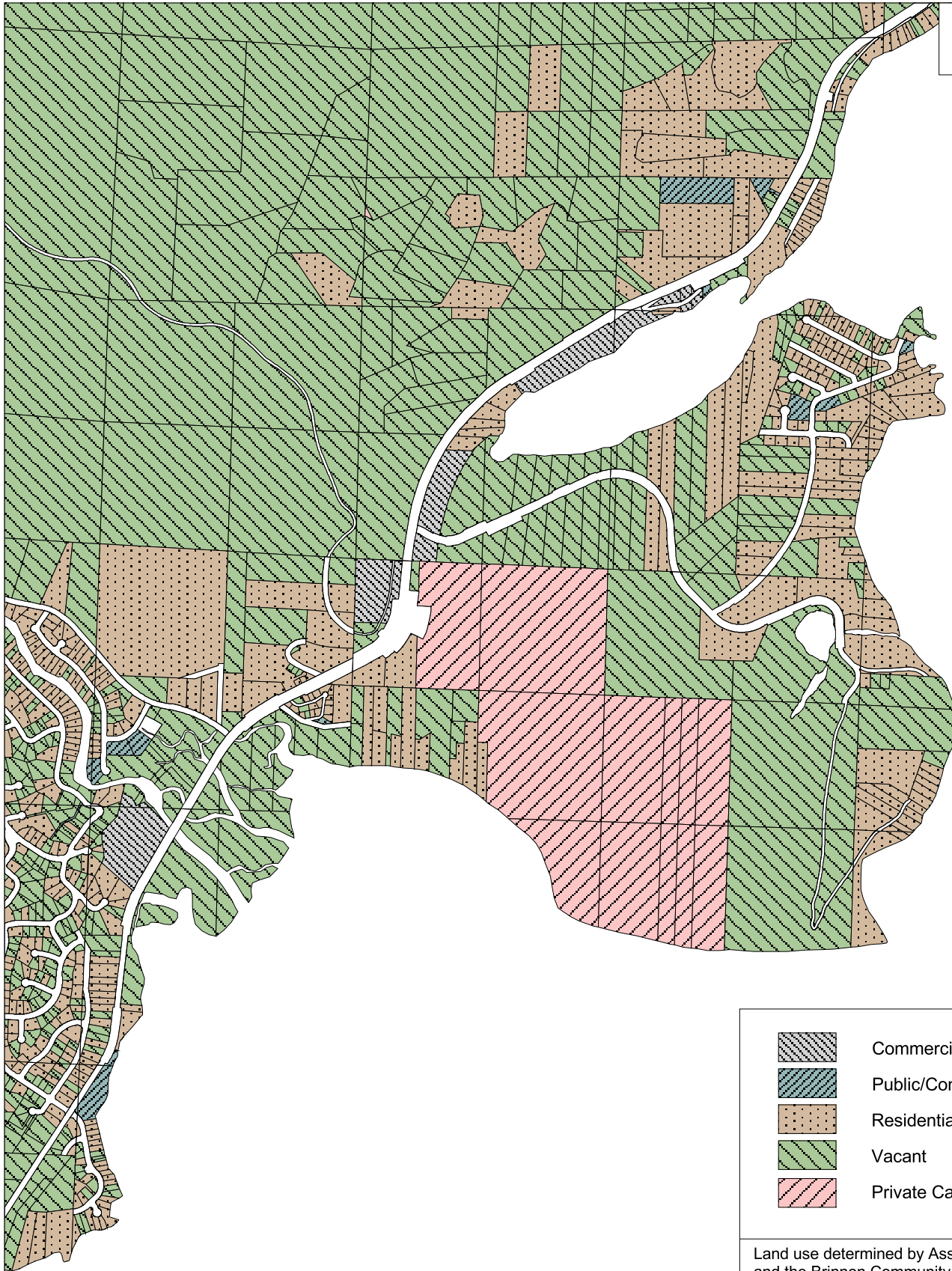


Figure BR-10



-  Commercial
-  Public/Community
-  Residential
-  Vacant
-  Private Campground/RV Park

Land use determined by Assessor land use codes and the Brinnon Community Planning Group

# BLACK POINT - EXISTING LAND USE

1000 0 1000 2000 Feet



FOR INFORMATIONAL PURPOSES ONLY --  
Jefferson County does not attest to the accuracy of the data contained herein and makes no warranty with respect to its correctness or validity. Data contained in this map is limited by the method and accuracy of its collection. Product of Jefferson County Integrated Data Management Systems. State Plane Coordinate System - Zone 5601 - NAD 83