

**Jefferson County
Board of Commissioners
Agenda Request**

To: Board of Commissioners
Philip Morley, County Administrator

From: Monte Reinders, Public Works Director/County Engineer

Agenda Date: June 16, 2014

Subject: Road Closure for Culvert Replacement on Egg & I Road
County Road No. 516009, Mile Post 3.028

Statement of Issue:

Resolution of Temporary Road Closure to facilitate replacement of one culvert on Egg & I Road.

Analysis/Strategic Goals/Pro's & Con's:

A temporary road closure is necessary to facilitate construction work for this project. The closure will increase safety for construction workers and the motoring public, and eliminate potential construction delays (see map and signage plan attached).

The closure will be in effect for three (3) working days beginning Monday, August 25, 2014 and ending at close of work Wednesday, August 27, 2014. Advance public notice per R.C.W. -47.48 will be implemented prior to closure. Alternate routes are available to motorists and emergency vehicles. Local Emergency Services will receive advance notice of closure.

Fiscal Impact/Cost Benefit Analysis:

The proposed road closure will improve the efficiency and economy of this construction project.


Recommendation:

Public Works recommends that the Board approve the attached Resolution and return one copy to Public Works (attn. Dale Seward).

Department Contact:

Dale Seward, Eng-1, 385-9353

Reviewed By:


Philip Morley, County Administrator

6/11/14
Date

**COUNTY OF JEFFERSON
STATE OF WASHINGTON**

In the Matter of x
Temporary Restriction of x
Traffic on Egg And I Road, x
County Road No. 516009 x

RESOLUTION NO. _____

WHEREAS, planned construction work for the Egg And I Road Culvert Replacement Project, Milepost 3.028, County Road No. 516009, will cause interruption and unavoidable delays to traffic, and

WHEREAS, potential hazard to the motoring public and the construction workers exists, and

WHEREAS, alternate routes around the work area will be available throughout the construction and closure period, and

WHEREAS, Chapter 47.48 R.C.W. authorizes closure of roads,

IT IS HEREBY RESOLVED that said Egg And I Road shall be closed at milepost 3.028 to all vehicular traffic for three (3) consecutive working days beginning Monday, August 25, 2014 and ending Wednesday, August 27, 2014 with proper advance notification posted in the local newspaper and on roadway signage.

ADOPTED THIS _____ DAY OF _____, 2014.

JEFFERSON COUNTY
BOARD OF COMMISSIONERS

John Austin, Chair

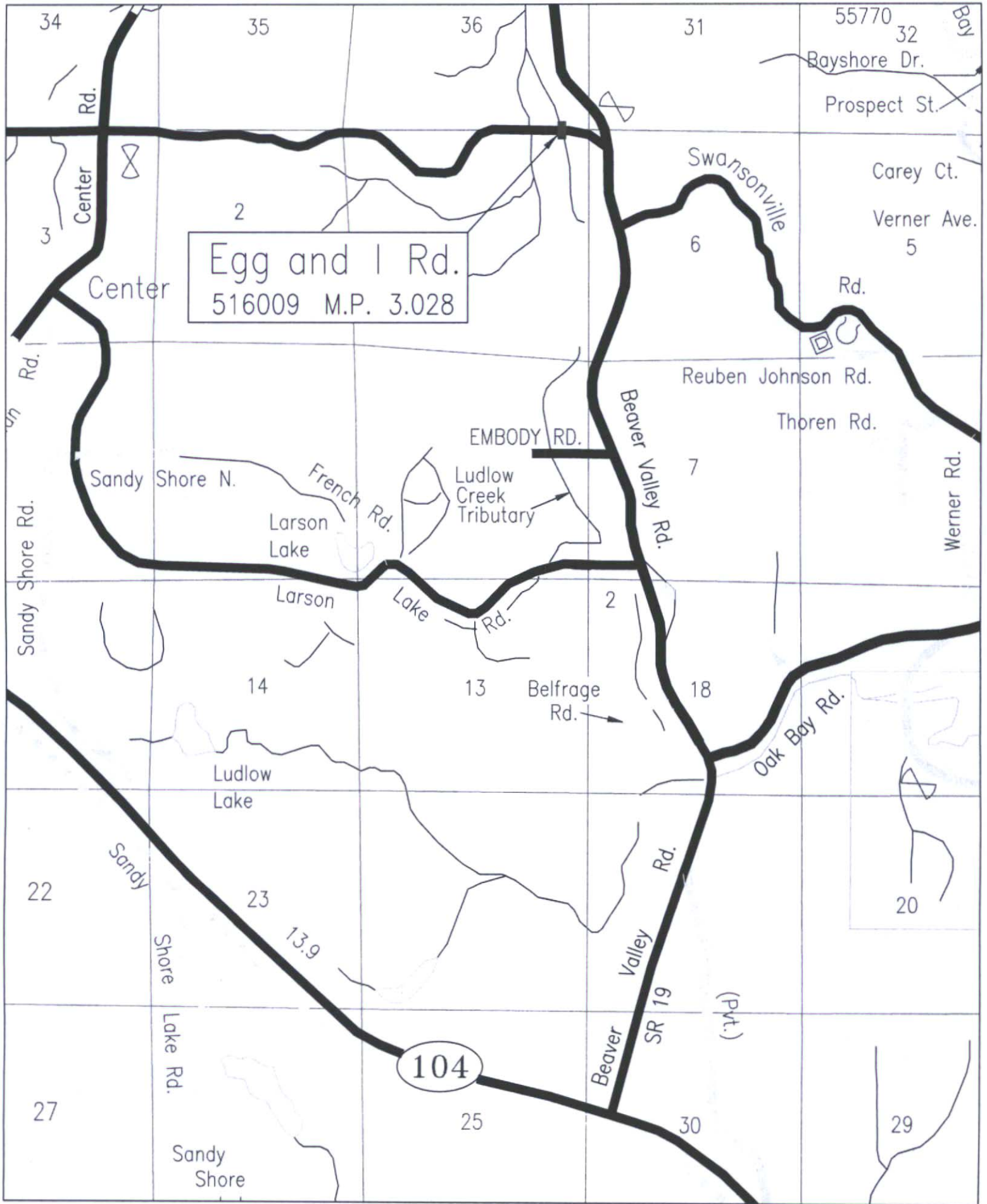
SEAL:

Phil Johnson, Member

ATTEST:

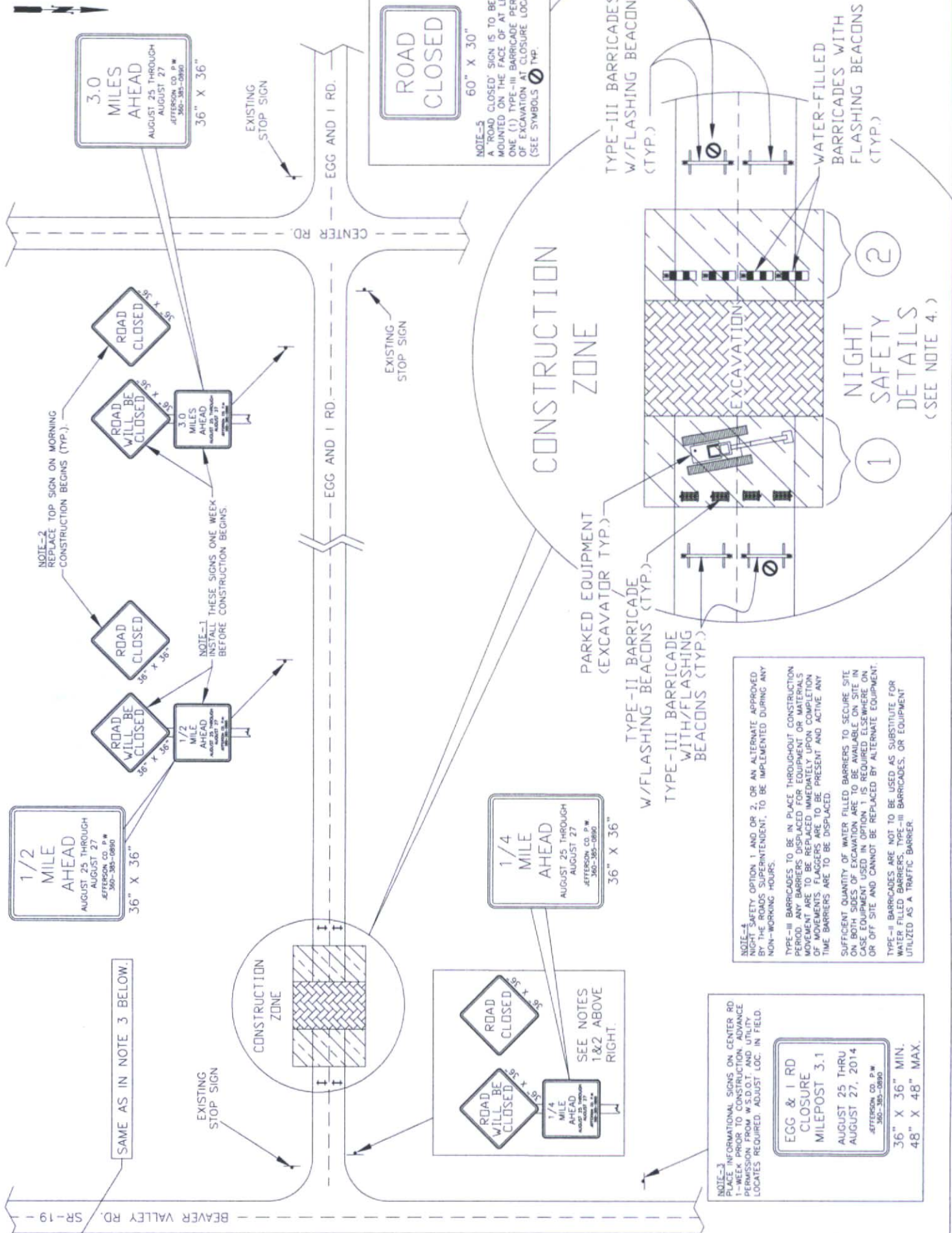
David W. Sullivan, Member

Carolyn Avery
Deputy Clerk of the Board



VICINITY MAP
 EGG & I ROAD CULVERT REPLACEMENT

NOT TO SCALE



NOTE-2
REPLACE TOP SIGN ON MORNING
CONSTRUCTION BEGINS (TYP.)

NOTE-1
INSTALL THESE SIGNS ONE WEEK
BEFORE CONSTRUCTION BEGINS.

NOTE-4
NIGHT SAFETY OPTION 1 AND OR 2, OR AN ALTERNATE APPROVED
BY THE ROADS SUPERINTENDENT, TO BE IMPLEMENTED DURING ANY
NON-WORKING HOURS.

NOTE-3
PLACE INFORMATIONAL SIGNS ON CENTER RD
1-WEEK PRIOR TO CONSTRUCTION. ADVANCE
PERMISSION FROM W.S.O.T. AND UTILITY
LOCITIES REQUIRED. ADJUST LOC. IN FIELD.

NOTE-5
A "ROAD CLOSED" SIGN IS TO BE
MOUNTED ON THE FACE OF AT LEAST
ONE (1) TYPE-III BARRICADE PER SIDE
OF EXCAVATION AT CLOSURE LOCATION
(SEE SYMBOLS TYP.)

NOTE-3
PLACE INFORMATIONAL SIGNS ON CENTER RD
1-WEEK PRIOR TO CONSTRUCTION. ADVANCE
PERMISSION FROM W.S.O.T. AND UTILITY
LOCITIES REQUIRED. ADJUST LOC. IN FIELD.

1
NIGHT SAFETY DETAILS
(SEE NOTE 4.)

2

CONSTRUCTION ZONE

PARKED EQUIPMENT
(EXCAVATOR TYP.)

TYPE-II BARRICADE
W/FLASHING BEACONS (TYP.)

TYPE-III BARRICADE
WITH/FLASHING
BEACONS (TYP.)

TYPE-III BARRICADES
W/FLASHING BEACONS
(TYP.)

WATER-FILLED
BARRICADES WITH
FLASHING BEACONS
(TYP.)

ROAD
CLOSED
60" X 30"

1/2
MILE
AHEAD
AUGUST 25 THROUGH
AUGUST 27
JEFFERSON CO. P.W.
360-385-0880
36" X 36"

3.0
MILES
AHEAD
AUGUST 25 THROUGH
AUGUST 27
JEFFERSON CO. P.W.
360-385-0880
36" X 36"

1/4
MILE
AHEAD
AUGUST 25 THROUGH
AUGUST 27
JEFFERSON CO. P.W.
360-385-0880
36" X 36"

ROAD
CLOSED
ROAD
WILL BE
CLOSED
1/4
MILE
AHEAD
AUGUST 25 THROUGH
AUGUST 27
JEFFERSON CO. P.W.
360-385-0880
SEE NOTES
1&2 ABOVE
RIGHT.

SAME AS IN NOTE 3 BELOW.

EXISTING
STOP SIGN

EXISTING
STOP SIGN

EXISTING
STOP SIGN

CONSTRUCTION
ZONE

CENTER RD.

EGG AND I RD.

EGG AND I RD.

BEAVER VALLEY RD. SR-19