

**JEFFERSON COUNTY
BOARD OF COUNTY COMMISSIONERS**

AGENDA REQUEST

TO: Board of County Commissioners
Philip Morley, County Administrator

FROM: Jared Keefer, Environmental Health & Water Quality Director

DATE: March 24, 2014

SUBJECT: Clean Water District Ordinance Amendment

STATEMENT OF ISSUE:

Jefferson County Public Health is requesting an amendment to the Clean Water District Ordinance that will require a public hearing.

ANALYSIS:

The Jefferson County Clean Water District Advisory Council (CWDAC) has found that Jefferson County Public Health has used Clean Water District funds to pursue a number of cost-effective projects that have restored and protected shellfish growing areas and clean water throughout Jefferson County. CWDAC also finds that these programs should continue and be developed further to establish a well-rounded suite of highly effective tools to protect shellfish and water quality in Jefferson County.

In December 2012, the Jefferson County Clean Water District Advisory Council (CWDAC) developed its recommendations for Clean Water District Activities and stable funding. These recommendations were presented to the BOCC in January of 2013.

Jefferson County Public Health is now requesting an amendment to the Clean Water District Ordinance to address the CWDAC recommendations. The primary change to the ordinance would be to meet Recommendation #2 and establish a stable funding source with which to achieve the CWDAC recommended activities (Recommendation #1).

RECOMMENDATION:

JCPH management's requests approval of an amendment to the Clean Water District Ordinance. BoCC is asked to approve and sign a hearing notice to set a public hearing for April 7, 2014 at 10:00 A. M. JCPH will be available to accept comments on the proposed ordinance at Jefferson County Commissioners at P.O. Box 1220, Port Townsend, WA 98368 or at its email address: jeffbocc@co.jefferson.wa.us

REVIEWED BY:



Philip Morley, County Administrator

3/20/14

Date

Publish one (1) time: March 26th, 2014
Bill: Jefferson County Commissioners Office
P. O. Box 1220
Port Townsend, WA 98368
Account: 15829 Non-Departmental

NOTICE OF PUBLIC HEARING

NOTICE IS HEREBY GIVEN that a Public Hearing for the purpose of taking written/oral testimony regarding a Proposed Ordinance Amending the Clean Water District (CWD) is scheduled for Monday, April 7th, 2014 at 10:00 a.m. in the Commissioners' Chamber, County Courthouse, 1820 Jefferson Street, Port Townsend, WA 98368.

This Ordinance, if adopted, will address the Clean Water District Activities Council (CWDAC) recommendations. A summary of the sections of the Ordinance follows:

Section One: CWD programs shall not be duplicative of other programs and services.

Section Two: The Board of Health (BOH) will coordinate activities of the CWD with other programs and activities which fall under the duties and responsibilities of the BOH.

Section Three: (In coordination with the Washington State Department of Health, the Washington State Department of Ecology, the Puget Sound Partnership, the Jefferson County conservation district, and to the appropriate entities), JCPH will be the responsible department for administering the CWD.

Section Five: The CWD will be evaluated annually for effectiveness via Jefferson County Code (JCC, i.e. advisory council) or the BOH.

Section Seven: Annual Fees will finance the CWD; specifically, Twenty (\$20) dollars per year per tax parcel, except parcels or lands described in JCC 8.65.100, adjusted annually per Consumer Price Index (CPIW).

Section Nine: Certain parcels exempt: within boundaries of City of Port Townsend and the Port Ludlow Master Planned Resort connected to a sanitary sewer service will not be subject to this fee. Lands classified as forest under Chapter 84.33 RCW and timber land under Chapter 84.34 RCW are exempt. Parcels and personal residence assessed for property tax purposes as senior citizen or disabled persons under RCW 84.36.381 (as enacted or amended) are exempt.

Section Ten: Severability clause

Section Eleven: Amendment will take effect seven (7) days after adoption.

A complete copy of the proposed ordinance is available at www.jeffersoncountypublichealth.org or call 360-385-9100. Submit written comments to the County Commissioners at P.O. Box 1220, 1820 Jefferson Street, Port Townsend, WA 98368, or email to jeffbocc@co.jefferson.wa.us

Approved this 24th day of March, 2014.

JEFFERSON COUNTY BOARD OF COMMISSIONERS

John Austin, Chairman

An Ordinance amending the }
Jefferson County Clean Water District, }
Jefferson County Code Ch. 8.65 }

ORDINANCE NO.

WHEREAS, the Findings of Fact listed below leads to the conclusion that the amending of Chapter 8.65 of the Jefferson County Code, entitled "Clean Water District," in order to establish a stable funding source for said District is not only authorized by state law but would promote the general health, safety and welfare of the citizens of Jefferson County, and

WHEREAS, Jefferson County Public Health consulted with staff from the City of Port Townsend to discuss the proposal to extend the applicability of Chapter 8.65 JCC to those parcels and premises located within the City not served by a sanitary sewer (as that term is defined and regulated in Ch. 36.89 RCW and Ch. 36.94 RCW) and City and County staff agreed such an extension was both lawful and in furtherance of the public policy behind Ch. 90.72 RCW,

NOW, THEREFORE, BE IT ORDAINED BY THE BOARD OF JEFFERSON COUNTY COMMISSIONERS as follows:

Section 01: Findings of Fact amended

Section 8.65.020(28) of the Jefferson County Code (JCC) is hereby revised to read as follows:

(28) Certain regions of Jefferson County, specifically the city of Port Townsend and the master planned resort at Port Ludlow, have in place stormwater management facilities and/or sanitary sewers that serve to control, properly dispose of and mitigate nonpoint sources of water pollution. Clean Water District programs shall not be duplicative of the programs and services provided in areas where fees, rates or charges are imposed under Chapters 36.89 and 36.94 RCW.

Section 02: Findings of Fact supplemented

Section 8.65.020 is amended to reflect the addition of the following text:

(29) The Jefferson County Board of Commissioners also serve on and appoint the Jefferson County Board of Health. The Jefferson County Board of Health is responsible for all matters pertaining to the life and health of the people of Jefferson County (as required by JCC 8.00.010). The Board of Health is well qualified to coordinate the activities of the Clean Water District under this Chapter with other programs and activities which fall under the duties and responsibilities of the Board of Health.

Section 03: Revision to JCC Section 8.65.050, “Assignment of a lead department”

Section 8.65.050 is amended in its entirety to read as follows:

8.65.050 Assignment of a lead department.

The Jefferson County Board of Commissioners hereby directs Jefferson County Public Health to serve as the county department responsible for administering the Clean Water District (in coordination with the Washington State Department of Health, the Washington State Department of Ecology, the Puget Sound Partnership, the Jefferson County conservation district, and other appropriate entities).

Section 04: Revision of the title of JCC Section 8.65.070

JCC Section 8.65.070 shall hereinafter be entitled “Advisory Council.”

Section 05: Revision to section .080 entitled “Program Evaluation”

JCC Section 8.65.080 is amended to read in its entirety as follows:

The Clean Water District shall be evaluated for effectiveness by the advisory council or Board of Health on an annual basis.

Section 06: Addition of a new section entitled “Oversight”

A new section is hereby added to Chapter 8.65 of the Jefferson County Code, said section to read in its entirety as follows:

The Jefferson County Board of Commissioners hereby directs the Jefferson County Board of Health to coordinate the activities of the Clean Water District under this Chapter with other programs and activities which fall under the duties and responsibilities of the Board of Health in JCC 08.00.010.

Section 07: Annual fee section repealed and replaced:

Section 8.65.090 of the Jefferson County Code (or “JCC”) is hereby repealed and replaced so that it shall read in its entirety as follows:

There is hereby established for the Clean Water District a financing mechanism, specifically a fee of Twenty Dollars (\$20.00) per year per tax parcel, except for parcels or lands described in in JCC 8.65.100.

This fee shall be adjusted annually accordingly on the first business day of January (Adjusted Date) by the amount of the increase in the Consumer Price Index (CPIW). The CPIW is the Consumer Price Index – US City Average for All Urban Wage Earners and Clerical Workers, published by the Bureau of Labor Statistics of the United States Department of Labor.



This fee adjustment shall be calculated as follows: it shall be increased by the percentage increase in the CPIW as reported for the month of September preceding the Adjustment Date. A fee shall not be reduced by reason of such calculation. However, fee increases in accordance with this calculation shall not exceed 5 percent per year.

Section 08: Text is added to the Public Health Fee Schedule:

The following text is added to the Fee Schedule for Public Health found in the Appendix to the Jefferson County Code:

Beginning with the year 2015, there is hereby established for the Clean Water District a fee of Twenty Dollars (\$20.00) per year per tax parcel, except for parcels or lands described in JCC 8.65.100.

The Clean Water District fee shall be adjusted annually accordingly on the first business day of January (Adjusted Date) by the amount of the increase in the Consumer Price Index (CPIW). The CPIW is the Consumer Price Index – US City Average for All Urban Wage Earners and Clerical Workers, published by the Bureau of Labor Statistics of the United States Department of Labor.

This fee adjustment shall be calculated as follows: it shall be increased by the percentage increase in the CPIW as reported for the month of September preceding the Adjustment Date. A fee shall not be reduced by reason of such calculation. However, fee increases in accordance with this calculation shall not exceed 5 percent per year.

Section 09: Certain parcels exempt from fee section rewritten:

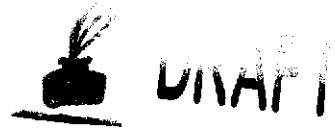
Section 8.65.100 of the Jefferson County Code (or “JCC”) is hereby repealed and replaced so that it shall read in its entirety as follows:

Parcels within the boundaries of the City of Port Townsend and the Port Ludlow Master Planned Resort connected to a sanitary sewer service will not be subject to this fee. Lands classified as forest land under Chapter 84.33 RCW and timber land under Chapter 84.34 RCW shall not be subject to said fee (as required by Chapter 90.72 RCW). Additionally, any parcel that is owned by, and is the personal residence of, a person or persons approved by the county assessor for a senior citizen or disabled persons property tax exemption under RCW 84.36.381 (as currently enacted or hereafter amended) is hereby exempted from this fee.

Section 10: Severability

If any provision of this ordinance, or its application to any person or circumstances, is held invalid, the remainder of this ordinance, or the application of the provisions to other persons or circumstances, shall not be affected.

Section 11: Effective Date:



This amendment to JCC 8.65 shall take effect seven (7) days after adoption.

ADOPTED this _____ day of _____, 2014.

Board of Jefferson County Commissioners

David Sullivan, Chairman

Phil Johnson, Member

John Austin, Member

ATTEST:

Clerk of the Board

David Alvarez 3/18/2014

Approved as to Form
David Alvarez, Chief Civil DPA

Jefferson County
Clean Water District Advisory Council

Jefferson County Board of County Commissioners
P.O. Box 1220
Port Townsend, WA 98368

COUNCIL MEMBERS

*Jefferson County Board of
County Commissioners*
David Sullivan

December 19, 2012

Dear Commissioners,

Jefferson County Public Health
Michael Dawson

The Jefferson County Clean Water District Advisory Council finds that the Jefferson County Water Quality Division has used Clean Water District funds to pursue a number of cost-effective projects that have restored and protected clean water in Jefferson County, and helped remove four pending shellfish growing area downgrades. The District also funds critical response services to complaints or pollution emergencies. The Clean Water District Advisory Council also finds that these programs should continue and be developed to enable the response to complaints and emergencies throughout the district. In addition, the Advisory Council believes the District could assess, prioritize, and work to remove water bodies from the EPA 303(d) list and conduct other activities to protect and restore water quality in Jefferson County.

Jefferson County Public Works
Jim Pearson

Therefore, the Clean Water District Advisory Council has adopted Recommendations 1 and 2, below.

*Jefferson County Conservation
District*
Dennis Schultz

Recommendation 1: The Clean Water District funds should be more inclusive of local needs. At a minimum, the activities in the package described in Attachment A should be undertaken.

Port Townsend City Council
David King

Recommendation 2: The Board of County Commissioners should ensure CWD funding for the recommended activities and programs by allocating sufficient resources from the General Fund, raising the assessment fee, evaluating the expansion of the assessment fee to areas of Port Townsend, partnering with Port Ludlow, or a combination of these.

Commercial Shellfish Growers
Gordon King

Citizen, Commissioner District #1
Richard Wojt

We thank you for your attention to these important matters, and for your continued service on behalf of the citizens of Jefferson County. Please do not hesitate to contact me at mdawson@co.jefferson.wa.us or 360-385-9444 x301 with questions or to discuss these recommendations further.

Citizen, Commissioner District #2
Amy Leitman

Citizen, Commissioner District #3
Richard Hull

Sincerely,



Michael Dawson
Jefferson County Environmental Health Specialist
Member, Jefferson County Clean Water District

Jefferson County
Clean Water District Advisory Council

Attachment A: Clean Water District Activities 2013

At its December 4 meeting, the Clean Water District Advisory Council adopted the following package of activities for the Clean Water District to conduct in 2013. The Council agreed that this package could be amended in the future as needs change.

1. See the current grant-funded projects through to completion.
2. Maintain current program function: Water Quality Monitoring for adverse impacts and trend analysis, PIC activities, Education & Outreach activities. Improve program design, development and implementation.
3. Use and increase CWD assessment funds to operate the program, leverage grant funds, and conduct select activities not supported by grant funds.
 - a. Implement a targeted and coordinated pursuit of grant funding that addresses county shellfish protection or water quality. Assess, prioritize, and work to remove water bodies from the EPA 303(d) list.
 - b. Investigate activities that other Clean Water Districts in Puget Sound conduct.

Goals:

 - i. To become more effective in our own operations, and
 - ii. To work with other districts to gauge interest in a coordinated monitoring program. If interest exists, begin to develop such a program. In future years, manage and disseminate data. Establish periodic reporting structure for trend analysis.
 - c. Seek other partnerships in support of the East Jefferson Watershed Council.
 - i. Work with legislators to amend RCW 90.82 to eliminate the WRIA sunset provision,
 - ii. Work to create an interlocal agreement to support EJWC, and/or
 - iii. Include EJWC in CWD-funded grant applications, when possible.
 - d. Support lake toxic algae monitoring.
4. Create a discretionary fund to cover emergencies and emerging opportunities, and to enable the District to conduct current program functions in #2 above throughout the Clean Water District, not just in the areas covered by grants.

Jefferson County Water Quality Department Clean Water District Plan

Problem Statement

Current division resources levels established in 2009 are inadequate. The original Clean Water District (CWD) fee request was for an \$18.00/parcel assessment. Upon approval by the BOCC of a \$5.00 CWD assessment, the county immediately began to supplant General Fund resources to the department.

From 2009 to 2013, the non-specific county contribution has been reduced approximately 72%. As a result, we have systematically reduced resources yet not reduced the workload. Currently, the Jefferson County Water Quality Department (JCWQ) is not doing the anticipated division work. What JCCW does accomplish annually is to meet contracted deliverables. At the current funding level JCCW and the Water Quality Department will continue to reduce activities as have been done for the past three years. Finally, the JCWQ does not anticipate meeting deliverables after 2014.

Items not currently being done due to lack of resources. (Some are either required or are critical function to shellfish protection)

- Conduct Clean Water District Advisory Council Meetings
- Develop a Water Quality Improvement Plan for Jefferson County
- Monitor for lake biotoxins at an appropriate risk level
 - 50% reduction in 2013 continued in 2014, reduced by 75% in 2015
- Manage allocations to and deliverables of the Conservation District
 - Eliminated in 2013, moved to County Administrators Office
- Cannot adequately use available grant funds due to lack of match
 - As was done in the Discovery Bay Project
- Conduct sanitary surveys in areas of greatest need and threats to water quality
 - Only monitor water quality in areas that grants will pay for during the grant period
- Conduct comprehensive Water Quality monitoring in the county
 - Only monitor water quality in areas that grants will pay for
- Continue to operate throughout the county managing threats and areas after grant funding expires
 - Found threats and areas of need continue unresolved once the grant ends
- Conduct Pollution Identification and Correction outside of the grant areas or grant periods
 - Found sources of pollution that can't be fixed by the end of the grant continue unresolved
- Conduct annual reporting to the BOCC or the public
 - Currently only do reporting to grant funders
- Conduct public outreach and education outside of project areas
 - Currently only do what is required by grant funders
- Coordinate activities with other Clean Water Districts and Shellfish Protection Districts
 - Currently only do what is required by grant funders

Revenue Sources

Primary revenue sources come from parcel fee assessment and local General Fund. Currently only a select portion of parcels in the Clean Water District are assessed (City of Port Townsend and Port Ludlow are not included). Secondary revenue sources are then found in State and Federal grants. State and Federal Grants are dependent upon the availability of the local General Fund and parcel assessment for grant match. Many grants in Water Quality don't allow the billing of indirect; leaving the only funding sources for administration costs as the county general fund and parcel assessment. In 2013, WQ paid more in interfund charges for rents and leases than what they received for non-specified county general fund. These cover county charges for vehicle, building rent, computers, copiers, GEMS, insurance, etc.

Jefferson County Water Quality Department Clean Water District Plan

What are we currently doing within the city of Port Townsend (Northeast Jefferson Project)?

1. Sample marine shoreline for pathogens
2. Survey marine shoreline for potential sources of pollution
 - a. Surface water runoff
 - b. Groundwater discharges
 - c. Discharge pipes and culverts
 - d. Other potential sources
3. Sample potential sources of pollution for pathogens
4. Conduct Pollution Identification and Control (PIC) investigations
5. Respond to public complaints about water quality or septic concerns
6. Sample stormwater discharges for pathogens
7. Communicate potential Illicit Discharge Detection and Elimination (IDDE) sites to PT public Works
8. Conduct Sanitary Surveys for all properties where wastewater is discharged and treated with a septic system
 - a. Provide individualized septic system information to the system owner
 - b. Conduct a quick survey for potential discharges, proper system operation and system owner knowledge
 - c. Conduct follow-up as needed
9. Conduct on-site wastewater disposal system permit compliance activities
10. Provide information on proper animal waste disposal including pet waste and farm animal manure
11. Refer landowners with animal manure management issues to Jefferson County Conservation District
12. Conduct public education and outreach to septic system owners
 - a. In-person distribution of literature on septic system care
 - b. Information on Operation & Monitoring Inspections including how to get homeowner inspection training
 - c. Informational mailers sent to absent owners
 - d. Assistance with low-interest financing for septic repairs
13. Conduct public education and outreach to the public on clean water district activities
 - a. Public presentations on project activities, findings and next steps
 - b. Newsletters mailed to all residents
 - c. Project report on public website

Jefferson County Water Quality Department Clean Water District Plan

Direct benefits of conducting these activities to Port Townsend:

- Reduce the number of improperly operating or failed septic systems in the community
- Reduce the number of potential pathogen sources that may impact public health in the community
- Reduce the number of pollution sources to the environment (groundwater, freshwater, marine water)
- Identify, investigate and remediate potential sources of pollution that can impact shellfish, fish or public health
- Through PIC, identify, investigate and remediate potential pollution impacts to the stormwater system
- Educate property owners on potential sources of pathogens released into the environment that were found and fixed.
- Provide information to septic system owners on the location and type of their septic system
- Provide information to septic system owners on proper septic system operation & maintenance
- Provide information to septic system owners on potential financing assistance for septic system repair
- Educate the public of potential sources of pathogens released into the environment that were found and fixed.
- For a period of three years, monitor water quality in the community to conduct trending analysis
- Inform the public as to the current trends in sources and status of pathogens found in the community

Additional general benefits:

Water Quality Projects throughout Jefferson County provide benefits to all area residents, such as:

- Safe harvesting of shellfish is maintained.
- Protection is given to one of the most valuable natural resources in the county, shellfish.
- Swimming beaches remain safe for recreational enjoyment without risk of pathogens.
- Jefferson County remains a popular vacation destination in part because of the unspoiled character of its water bodies.

Jefferson County Water Quality Department Clean Water District Plan

Lot Consolidation

There are currently two methods that property owners can use to consolidate their contiguous lots into one. A property owner could do this for a number of reasons: resale purposes, development opportunities, consolidate taxable parcels, etc. Both of these methods are done utilizing the Jefferson County Department of Community Development (DCD).

Method 1 – Formal Lot Consolidation

This process may be used for development opportunities, especially if the original lots are small, do not meet minimum land area for development and the resulting lot would meet minimum land area for development. This also creates one taxable parcel for the property owner so that they do not have multiple tax bills.

This is a process that is best described as an abbreviated Boundary Line Adjustment. This process does not require a property survey or soil evaluation. While this process enlarges the lots, it does not necessarily guarantee development opportunities. The basic premise is that it renders formally undevelopable lots into lots that are more likely to be developable. The current cost for this process is \$664. Please be aware that I have not detailed out the intricacies of this process. For detailed information on this process, please see staff in DCD.

Method 2 – Restrictive Covenant to Property Title

This process creates one taxable parcel for the property owner so that they do not have multiple tax bills. This may be used for tax purposes only. It attaches a restrictive covenant to the title of the properties involved creating one taxable lot. It does not alter the existing lot lines or carry any development opportunities with it.

The DCD has templates of these covenants on file. The property owner would only need to complete the template and attach to their property titles with the auditor's office. The DCD does not charge a fee for the template. The only fees incurred would be the auditors filing fee which is currently \$72.00 for the first page and \$1.00/page for any additional pages. Please be aware that I have not detailed out the specific items that need to be completed on the restrictive covenant. For detailed information on this process, please see staff in DCD.

Jefferson County Water Quality Department Clean Water District Plan

Foundational Funding Plan

Implement a more functional and accountable program to meet the needs of the community and the shellfish industry. These activities would include much of recommendations made by the Clean Water District Advisory Council. In order to accomplish this JCWQ proposes to the BOCC that the parcel assessment amount be amended to \$20.00/parcel per year. Additionally, except for current exemptions for timber property and reduced income senior citizens, the parcels assessed would be expanded to include all parcels within the boundaries of the established Clean Water District that are not served by sanitary sewer. Finally, a CPI rate would be applied to the ordinance that would allow the fee to automatically adjust for inflation.

Activities that would be implemented

- Quarterly Clean Water District Advisory Council Meetings
 - Development of a Clean Water District Plan, with strategic action items, deliverables and reporting to the BOCC
- Conduct annual reporting to the BOCC or the public
- Establish a Strategic Reserve account for emergencies and threat abatement activities
- Conduct sanitary surveys in areas of greatest need and threats to water quality throughout East Jefferson County, when needed
- Implement a comprehensive Water Quality monitoring program in East Jefferson County
 - Conduct baseline and trend analyses in order to measure status and progress toward water quality goals
- Complete threat and areas management until items identified are addressed
 - Implement a Pollution Identification and Correction Program throughout East Jefferson County to respond and correct found sources of water pollution
- Implement shellfish protection and clean water public outreach and education throughout East Jefferson County
- Monitor for lake biotoxins at an appropriate risk level
 - Return to activities conducted in 2012 and prior years
- Manage allocations to and deliverables of the Conservation District
 - Coordinate county pass through funding and align that funding with the goals, strategies and actions of the Clean Water District and the Water Quality Department

Jefferson County Water Quality Department Clean Water District Plan

Anticipated Primary Revenue Needs

Current Parcel Fee + existing need	\$241,200	
CWDAC Meetings	\$20,000	Staff time and facilitation to prepare for and conduct quarterly CWDAC meetings
Reporting, Ed and Outreach	\$15,000	Staff time to prepare and distribute reports, educational & outreach materials
One-time Emergency Projects	\$7,500	Reserve to address emergencies and abate threats to shellfish growing areas
Implement WQ Monitoring	\$55,000	Includes Conserv. District Mgmt. & Coordination
PIC Program	\$45,000	
Lake Biotoxin Monitoring	\$15,000	Restores cuts made in 2013
Total needed via parcel assessment	\$398,700	
Treasurer's office annual fee*	(\$3,987)	
Fee/parcel to recoup total	\$22.93	Approx # of Parcels 17,559

*1% of the total assessment goes to the treasurer's office as a fee for service
RED indicates the need to replace the funding source with the parcel assessment

Approx. # of City Parcels to be included (not served by sewer): 2112
Approx. # of County Parcels to be included (not served by sewer): 509

**With the addition of the approximate parcels listed above (2621),
the fee per parcel would be reduced to \$19.76.**

Clean Water and Shellfish Protection District Funding Sources in Washington State

County	Funding Source	Parcel Fee	Related Notes
Clallam	General Fund	None	Funded by General Fund
Clark	Parcel Fee	\$33.00, in addition to other funding sources	Based Upon Parcel size. An additional \$33.00 stormwater fee is also assessed per parcel
Grays Harbor County		Currently forming a Shellfish Protection District and exploring funding options	
Island	Parcel Fee and General Fund	\$39.00 - Clean Water Utility	Funded by Clean Water Utility Fund and General Fund. A portion of the Clean water utility is used by Public Works to complete infrastructure work in the Shellfish protection District
King	Parcel Fee	No Clean Water District or Shellfish Protection District	Approx. 60% of King County Conservation District budget is allocated to Clean Water/Shellfish Protection activities. These are funded by per parcel rates through KCD.
Kitsap	Parcel Fee	\$69.80	\$2.30 is held for use on county stormwater facility replacement
Mason	Sales Tax	None	Funded by a sales tax increase in the rural area
Pacific County		No Clean Water District or Shellfish Protection District	
Pierce	Parcel Fee	\$103.17 - SFR ¹ \$133.18 - Duplex \$66.59 - Mobile Home Park Condo \$103.17 + \$0.0293 - \$0.0391/ft ² for Impervious or Gravel Surface - Urban Area parcels \$103.17 - MFR ² + \$0.0293 - \$0.0391/ft ² for Impervious or Gravel Surface \$19.06 - Vacant land + \$0.3812 /acre \$0.0045 - \$0.0059/ft ² - State, County and Fed Hways	Rates vary by location. In addition to Conservation District fee ranging from \$3.96 - \$5.00 per parcel depending upon parcel type.
San Juan	Excise Tax	San Juan Island \$65* Orcas Island \$688* Lopez Island \$110*	REET funds and roads often share financial burden
Skagit	Parcel Fee	\$28.01 - SFR ¹ \$34.53 - MFR ² \$0.0091/ft ² \$0.00345/ft ²	Of impervious surface on Commercial, apartment, industrial or institutional parcels Of impervious surface on county roads
Snohomish	Parcel Fee	\$90.00 - SFR ¹ (\$22.45 reserved for activities similar to JCCWD) \$81.00 - Condo Unit \$0.00 bare farm land \$2.07/ 1/4 acre - farm \$2.07/ 1/4 acre - farm \$26.99 - \$269.97 / 1/4 acre - retail Former CWD parcels: \$13.87 - SFR, \$12.48 - Condo Unit; Retail/commercial \$4.16 - \$41.60 /1/4/ acre	Add the following rates for parcels in the UGA: \$32.00 \$28.80 \$0.00 \$0.74, 44 acre max \$0.36, For farms with an implemented plan, 44 acre max; \$0.36 \$9.60 - \$95.99 / 1/4 acre
Thurston	Parcel Fee	\$60 - \$145	Rates vary by parcel type and septic system type
Whatcom	Parcel Fee and Tax Assessment	\$60.24 - \$104.52 \$0.1351231409 per \$1,000.00 of assessed value	BBWARMD Funded through the flood tax

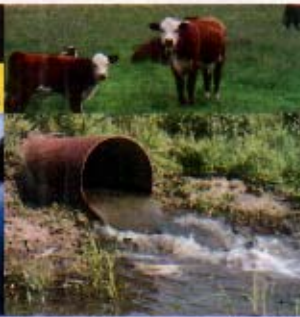
Table Current as of November 2012

*Data from 2007
 1 - Single Family Residence
 2 - Multi-family Residence

Lowest Fees:
 Pierce Co. - \$19.06 for vacant land
 Snohomish Co. - \$22.45 for Single Family Residential

Primary District Funding Type	# of Counties	% of Total
Per Parcel Fee	9	75.00%
General Fund	1	8.33%
Real Estate Excise Tax	1	8.33%
Sales Tax	1	8.33%
Total	12	

Average Fee:	\$104.76
Average Fee (removing the top outliers):	\$70.74



JEFFERSON COUNTY WATER QUALITY

615 Sheridan Street ♦ Port Townsend ♦ Washington ♦ 98368
www.jeffersoncountypublichealth.org

Who Are We?

We are responsible for ensuring and improving the water quality of all 950 river miles and 200 miles of shoreline in our rural community. We actively partner with landowners, the shellfish industry, tribes, non-governmental organizations and other government agencies. We cover an area on the Olympic Peninsula that borders the Olympic National Forest and the shorelines of the Strait of Juan de Fuca, Puget Sound and Hood Canal.

We serve as guardians to a shellfish industry which contributes approximately \$20 million a year to the county economy.

For every local \$1 that we commit to projects, WA State will contribute \$3 more toward water quality and shellfish protection.

What We Do?

- Respond to and track complaints of improperly functioning septic systems.
- Regularly monitor streams and rivers, building a long-term picture of their health.
- Test for fecal bacteria, such as E. coli and fecal coliform.
- Assess factors critical for salmon and trout such as stream temperatures and dissolved oxygen.
- Track down sources of water pollution and work to get them corrected.
- Conduct sanitary surveys for landowners to help educate them on their septic system.
- Monitor area swimming beaches for the presence of harmful bacteria.
- Sample shellfish for biotoxins and post warning signs at recreational shellfish beaches.
- Test recreational lakes for the presence of harmful bio-toxins due to algae.
- Restore riparian areas by removing invasive weeds and planting native trees and shrubs.
- Partner with the Conservation District to encourage agricultural best practices.

What is Our Role in the Community?

We research, investigate and inform on topics ranging from pollution sources, watershed management, water-based recreation, healthy home environments, bio-toxins, and land use.

We supply important services to our larger community of local growers, landowners, developers, and conservationists so that we may work effectively together to foster and sustain the benefits of healthy shorelines and waterways.

We work in the field and in our communities - collecting water samples and talking with landowners about ways of protecting our watersheds, extending the life of septic systems, and helping to raise animals while conserving and restoring habitat for wildlife. We investigate sources of pollution, evaluate the severity, assess what can be done, and take the necessary steps to ensure an effective response.

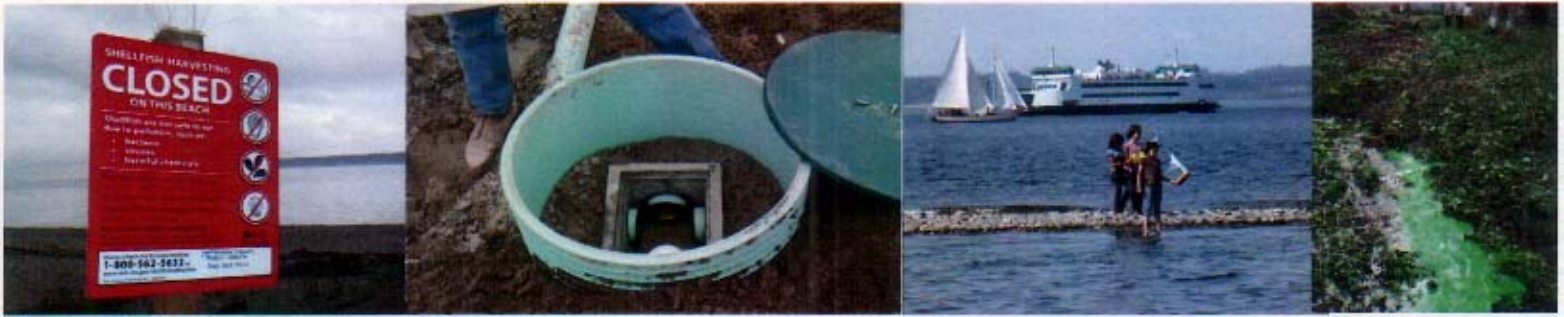
We educate the public on bio-toxins in area lakes and on pollution sources that can impact shellfish beds. We support healthy environments, sustainable practices and empower citizens to make healthy choices.



PUBLIC HEALTH
ALWAYS WORKING FOR A SAFER AND HEALTHIER COMMUNITY

Our Successes

- Collected data on every major stream in Clean Water District.
- 120 miles of marine shoreline monitored for pollution sources.
- Tested 10 lakes for toxic algae.
- Completed over 1,500 homeowner sanitary surveys.
- Located over 125 septic systems that are suspect of contaminating water or are failed systems.
- Located over 200 septic systems that were not permitted to be installed.
- Supported the Conservation District with over \$315,000 for projects.
- Reduced sites in Discovery Bay that failed the fecal coliform standard by 58%.
- Initiated pollution correction activities on the Big Quilcene River to keep downstream shellfish beds open.
- 4 of the 6 threatened downgrades to shellfish growing areas were lifted after action was taken.
- Planted over 70 acres of riparian restoration and weed control.
- Installed over 25,000 feet of fencing to exclude livestock from waterways.



JEFFERSON COUNTY WATER QUALITY

615 Sheridan Street ♦ Port Townsend ♦ Washington ♦ 98368
www.jeffersoncountypublichealth.org

Financial Support for Jefferson County Water Quality

The majority of Water Quality Department funding comes from the state government through two different state agencies: the State Department of Ecology and the State Department of Health. In addition to the state, the next highest source of funds is the Clean Water District Assessment. A relatively small percentage of total funding has been provided by the Jefferson County General Fund, which is unlikely to provide funds after 2014. Due to funding restrictions on State and Federal funds, the General Fund and Assessment components are the primary sources of funds used to pay for division administration and overhead as well as obtaining grants and division administration.

Increasing the parcel fee assessment to \$20.00 a year will ensure that successful projects continue to protect our local values and our shellfish industry.

Our Highest Priorities for Water Quality Funding

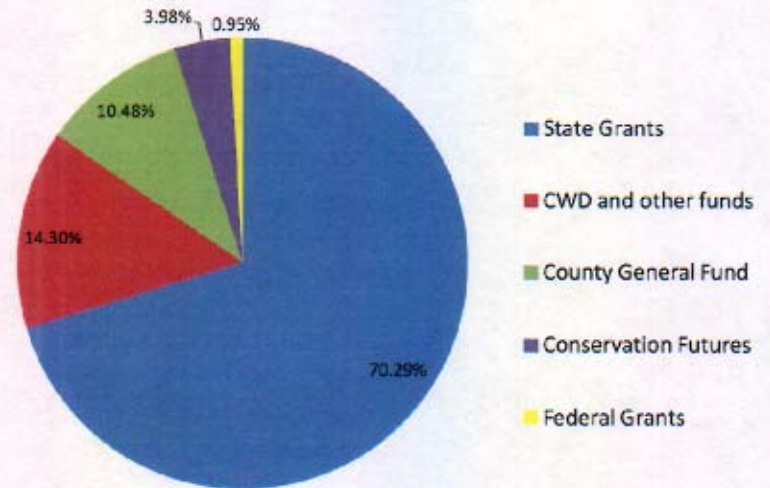
1. Ongoing pollution source identification and correction
2. Comprehensive water quality monitoring throughout the Clean Water District
3. Correct impairments to water bodies currently listed on the EPA 303(d) list of impaired waters
4. Eliminate human fecal impacts to water
5. Respond to emerging threats that impact shellfish harvesting sites

Local Effects of Cuts to Services that Protect the Public's Health

Local monies are used to match grant funding made available at the State and Federal levels. Additionally, local monies are used to cover the portion of division administration and overhead which the grants don't pay for. Current local cuts have already reduced the amount of work being done putting the public health and local shellfish at risk.

- No funding to develop a comprehensive strategy to clean water and shellfish protection. Currently only doing ad-hoc projects to meet grant needs.
- Pathogen testing at local recreational beaches has been reduced.
- Biotoxin monitoring reduced by 50% putting people who use water for recreation at greater risk as well as the shellfish industry.
- Issues identified and unresolved by the end of the project period remain unaddressed. For example, fecal pathogens in Mats Bay.
- Water Quality and Shellfish harvesting area emergencies do not get fixed. This puts harvest areas, business and the public's health potentially at risk.

2014 WQ Funding Sources



Fast Fact: About **36,000** acres of shellfish beds – approximately 19% - are closed due to pollution sources.*

*Puget Sound Partnership, November 1st, 2013.
http://www.psp.wa.gov/vitalsigns/shellfish_beds_reopened.php

For more information, contact:

Jared Keefer, MPH, RS
 Director of Environmental Health and Water Quality
 (360) 385-9411

Michael Dawson
 Lead Environmental Health Specialist
 (360) 344-9301

PUBLIC HEALTH
 ALWAYS WORKING FOR A SAFER AND
 HEALTHIER COMMUNITY