

**Jefferson County
Board of Commissioners
Agenda Request**

To: Board of Commissioners
Philip Morley, County Administrator

From: Frank Gifford, Public Works Director *FG*

Agenda Date: July 15, 2013

Subject: Road Closure for Culvert Replacement on Egg & I Road
County Road No. 516009, Mile Post 3.1

Statement of Issue:

Resolution of Temporary Road Closure to facilitate replacement of one culvert on Egg & I Road.

Analysis/Strategic Goals/Pro's & Con's:

A temporary road closure is necessary to facilitate construction work for this project. The closure will increase safety for construction workers and the motoring public, as well as eliminate potential construction delays (see map and signage plan attached).

The closure will be in effect for three (3) working days beginning Monday, August 26, 2013 and ending at close of work Wednesday, August 28, 2013. Advance public notice per R.C.W.-47.48 will be implemented prior to closure. Alternate routes are available to motorists and emergency vehicles. Local Emergency Services will receive advance notice of closure.

Fiscal Impact/Cost Benefit Analysis:

The proposed road closure will improve the efficiency and economy of this construction project.

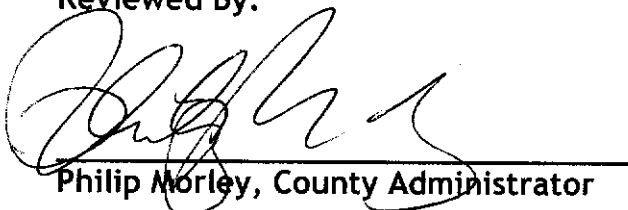
Recommendation:

Public Works recommends that the Board approve the attached Resolution and return one copy to Public Works (attn. Dale Seward).

Department Contact:

Dale Seward, Eng-1, 385-9353

Reviewed By:


Philip Morley, County Administrator

7/15/13
Date

**COUNTY OF JEFFERSON
STATE OF WASHINGTON**

In the Matter of x
Temporary Restriction of x
Traffic on Egg And I Road, x
County Road No. 516009 x

RESOLUTION NO. _____

WHEREAS, planned construction work for the Egg And I Road Culvert Replacement Project, Milepost 3.1, County Road No. 516009, will cause interruption and unavoidable delays to traffic, and

WHEREAS, potential hazard to the motoring public and the construction workers exists, and

WHEREAS, alternate routes around the work area will be available throughout the construction and closure period, and

WHEREAS, Chapter 47.48 R.C.W. authorizes closure of roads,

IT IS HEREBY RESOLVED that said Egg And I Road shall be closed at milepost 3.1 to all vehicular traffic for three (3) consecutive working days beginning Monday, August 26, 2013 and ending Wednesday, August 28, 2013 with proper advance notification posted in the local newspaper and on roadway signage.

ADOPTED THIS _____ DAY OF _____, 2013.

JEFFERSON COUNTY
BOARD OF COMMISSIONERS

John Austin, Chair

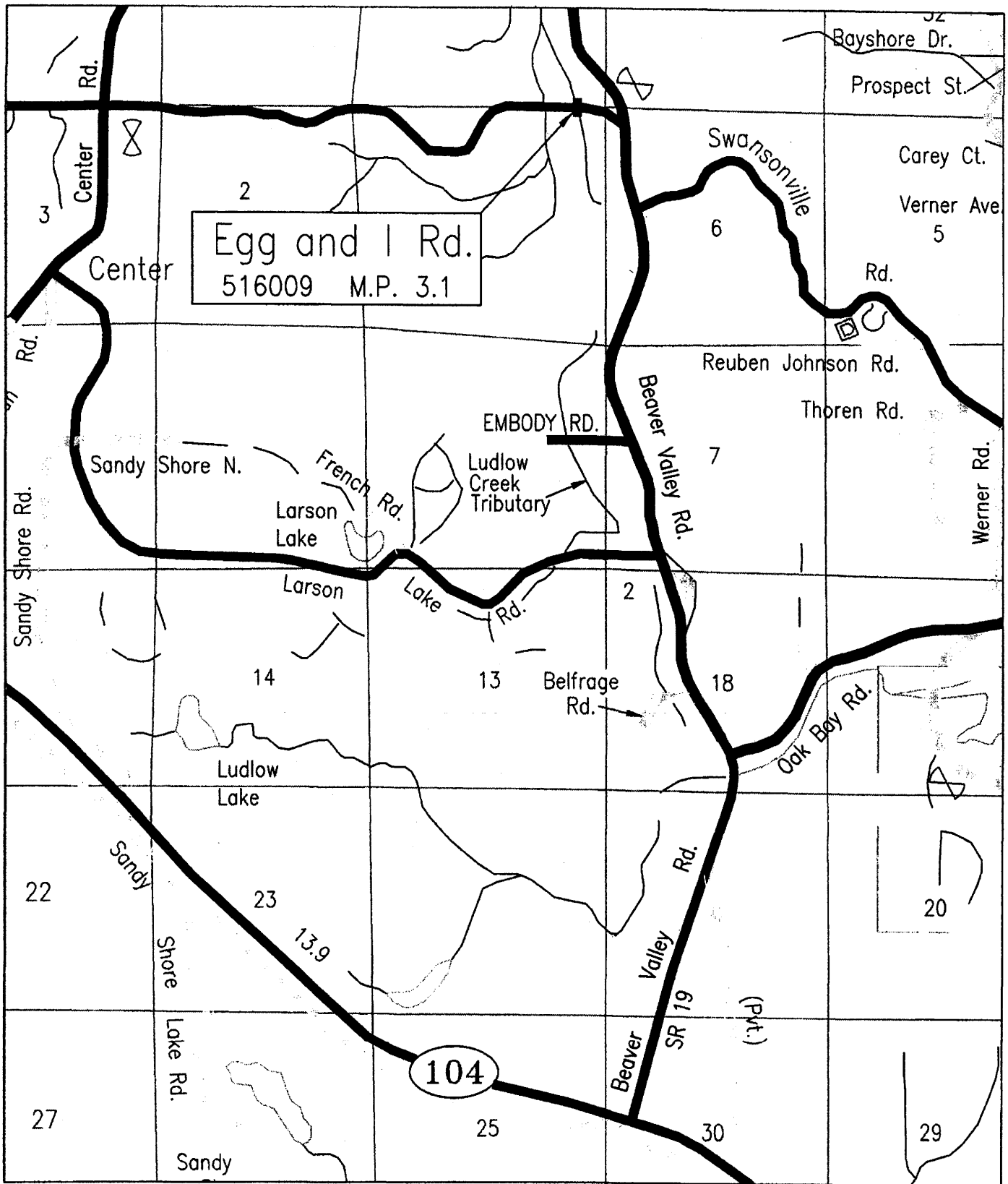
SEAL:

ATTEST:

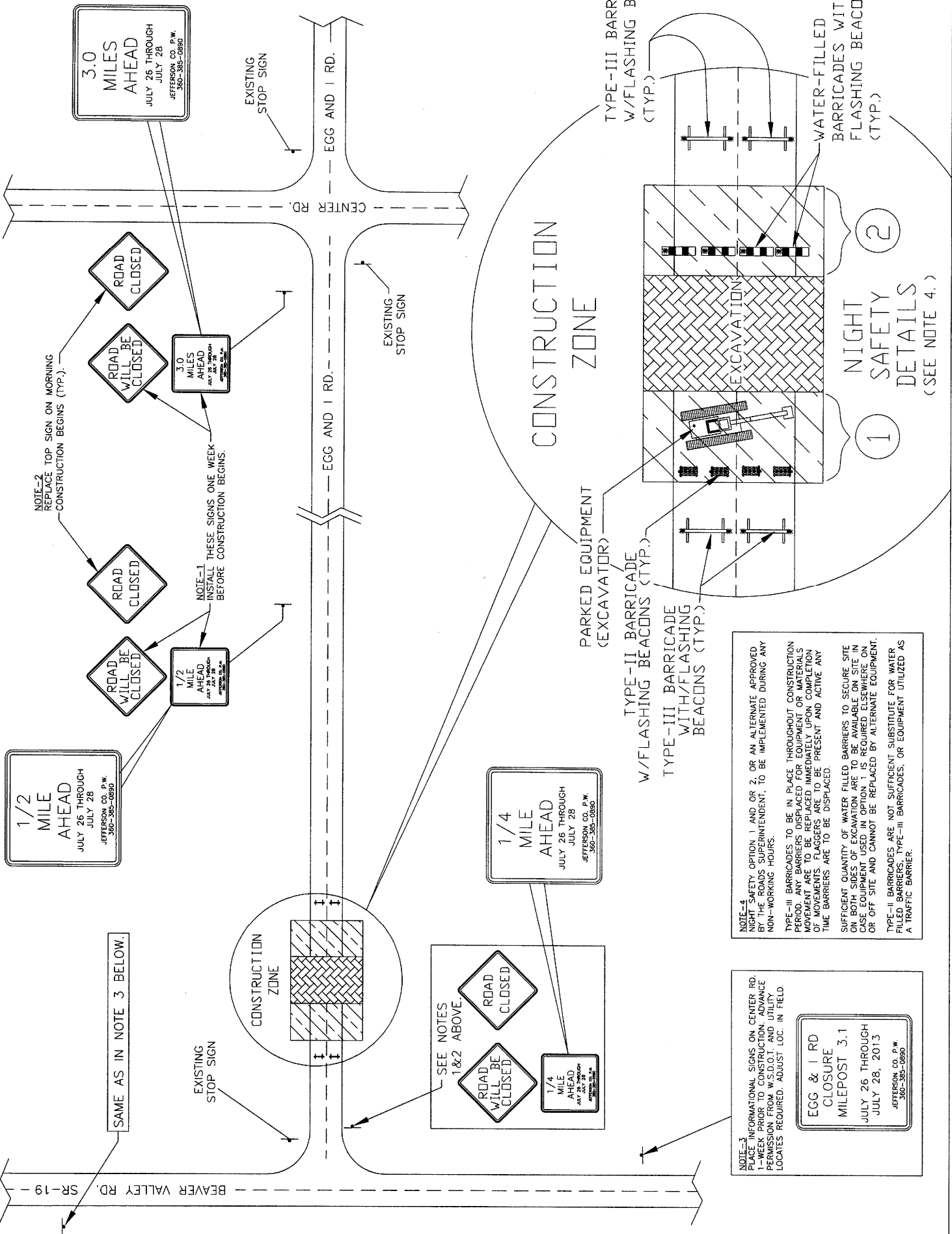
Phil Johnson, Member

David W. Sullivan, Member

Carolyn Avery
Deputy Clerk of the Board



**EGG AND I ROAD CULVERT REPLACEMENT
VICINITY MAP**



NOTE-2
REPLACE TOP SIGN ON MORNING
CONSTRUCTION BEGINS (TYP.).

NOTE-1
INSTALL THESE SIGNS ONE WEEK
BEFORE CONSTRUCTION BEGINS.

SAME AS IN NOTE 3 BELOW.

SEE NOTES
1&2 ABOVE.

ROAD
WILL BE
CLOSED

ROAD
CLOSED

1/4
MILE
AHEAD
JULY 26 THROUGH
JULY 28
JEFFERSON CO. P.W.
360-385-0890

NOTE-4
NIGHT SAFETY OPTION 1 AND OR 2, OR AN ALTERNATE APPROVED
BY THE ROADS SUPERINTENDENT, TO BE IMPLEMENTED DURING ANY
NON-WORKING HOURS.

NOTE-3
PLACE INFORMATIONAL SIGNS ON CENTER RD.
1-WEEK PRIOR TO CONSTRUCTION. ADVANCE
PERMISSION FROM W.S.D.O.T. AND UTILITY
LOCATES REQUIRED. ADJUST LOC. IN FIELD

NOTE-5
TYPE-III BARRICADES TO BE IN PLACE THROUGHOUT CONSTRUCTION
PERIOD. ANY BARRIERS DISPLACED FOR EQUIPMENT OR MATERIALS
MOVEMENTS, OR LOGGERS, ARE TO BE PRESENT AND ACTIVE ANY
TIME BARRIERS ARE TO BE DISPLACED.

NOTE-6
SUFFICIENT QUANTITY OF WATER FILLED BARRIERS TO SECURE SITE
ON BOTH SIDES OF EXCAVATION ARE TO BE AVAILABLE ON SITE IN
CASE EQUIPMENT USED IN OPTION 1 IS REQUIRED ELSEWHERE ON
OR OFF SITE AND CANNOT BE REPLACED BY ALTERNATE EQUIPMENT.

NOTE-7
TYPE-II BARRICADES ARE NOT SUFFICIENT SUBSTITUTE FOR WATER
FILLED BARRIERS. TYPE-III BARRICADES, OR EQUIPMENT UTILIZED AS
A TRAFFIC BARRIER.

EGG & I RD
CLOSURE
MILEPOST 3.1
JULY 26 THROUGH
JULY 28, 2013
JEFFERSON CO. P.W.
360-385-0890

1
2

NIGHT
SAFETY
DETAILS
(SEE NOTE 4.)

CONSTRUCTION
ZONE

PARKED EQUIPMENT
(EXCAVATOR)

TYPE-II BARRICADE
W/FLASHING BEACONS (TYP.)

TYPE-III BARRICADE
WITH/FLASHING
BEACONS (TYP.)

TYPE-III BARRICADES
W/FLASHING BEACONS
(TYP.)

WATER-FILLED
BARRICADES WITH
FLASHING BEACONS
(TYP.)

EXISTING
STOP SIGN

EXISTING
STOP SIGN

EXISTING
STOP SIGN

EGG AND I RD.

EGG AND I RD.

CONSTRUCTION
ZONE

3.0
MILES
AHEAD
JULY 26 THROUGH
JULY 28
JEFFERSON CO. P.W.
360-385-0890

3.0
MILES
AHEAD
JULY 26 THROUGH
JULY 28
JEFFERSON CO. P.W.
360-385-0890

ROAD
WILL BE
CLOSED

ROAD
WILL BE
CLOSED

ROAD
WILL BE
CLOSED

ROAD
WILL BE
CLOSED

1/2
MILE
AHEAD
JULY 26 THROUGH
JULY 28
JEFFERSON CO. P.W.
360-385-0890

1/4
MILE
AHEAD
JULY 26 THROUGH
JULY 28
JEFFERSON CO. P.W.
360-385-0890

BEAVER VALLEY RD. SR-19

CENTER RD.