

RANGE 02 W

RANGE 01 W

RANGE 01 E

TOWNSHIP 31 N

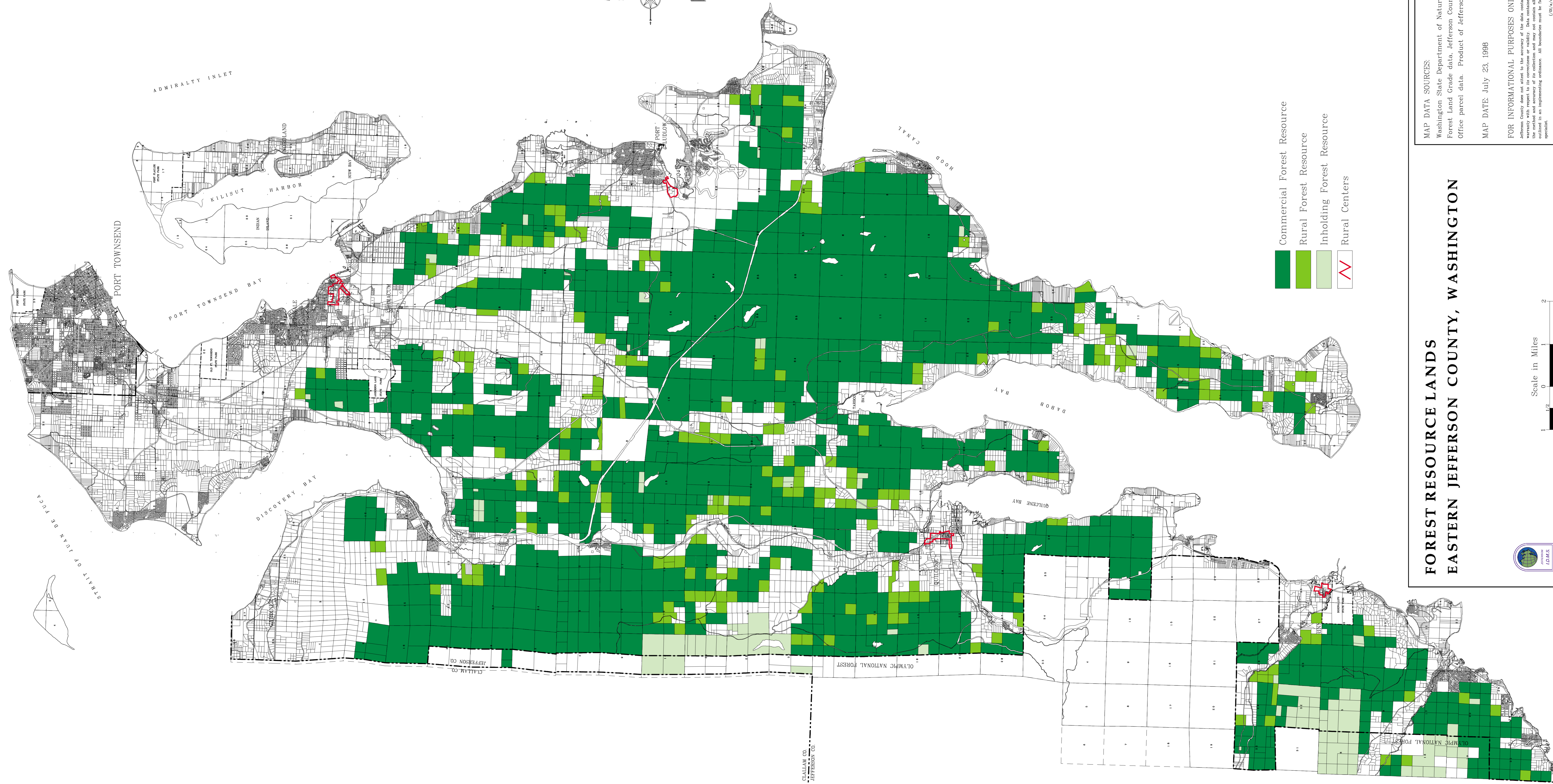
TOWNSHIP 30 N

TOWNSHIP 29 N

TOWNSHIP 28 N

TOWNSHIP 27 N

TOWNSHIP 26 N



- Commercial Forest Resource
- Rural Forest Resource
- Inholding Forest Resource
- Rural Centers

**FOREST RESOURCE LANDS  
EASTERN JEFFERSON COUNTY, WASHINGTON**

MAP DATA SOURCES:  
Washington State Department of Natural Resources  
Forest Land Grade data, Jefferson County Assessor's  
Office parcel data, Product of Jefferson County IDMS.

MAP DATE: July 23, 1998

FOR INFORMATIONAL PURPOSES ONLY —  
Jefferson County does not attest to the accuracy of the data contained herein and makes no  
warranty with respect to the correctness or validity. Data contained in this map is limited by  
the method and accuracy of its collection and may not contain all the regulatory criteria  
outlined in an implementing ordinance. All boundaries must be field verified by an appropriate  
agency.  
(48/a/complan98/forest@psum)



JEFFERSON CO.  
MAISON CO.

RANGE 02 W

RANGE 01 W

RANGE 01 E