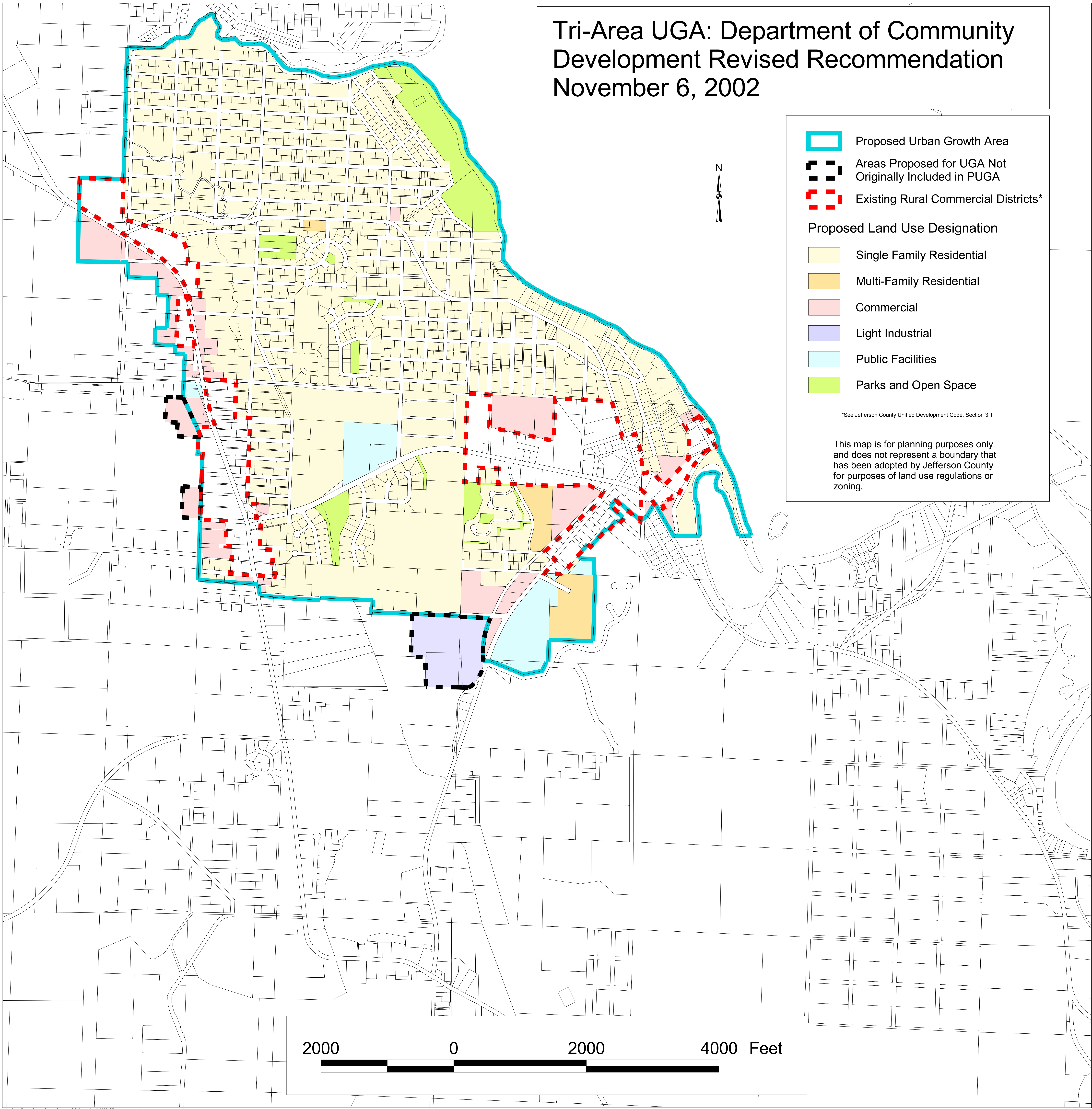


# Tri-Area UGA: Department of Community Development Revised Recommendation November 6, 2002



- Proposed Urban Growth Area
- Areas Proposed for UGA Not Originally Included in PUGA
- Existing Rural Commercial Districts\*

**Proposed Land Use Designation**

- Single Family Residential
- Multi-Family Residential
- Commercial
- Light Industrial
- Public Facilities
- Parks and Open Space

\*See Jefferson County Unified Development Code, Section 3.1

This map is for planning purposes only and does not represent a boundary that has been adopted by Jefferson County for purposes of land use regulations or zoning.