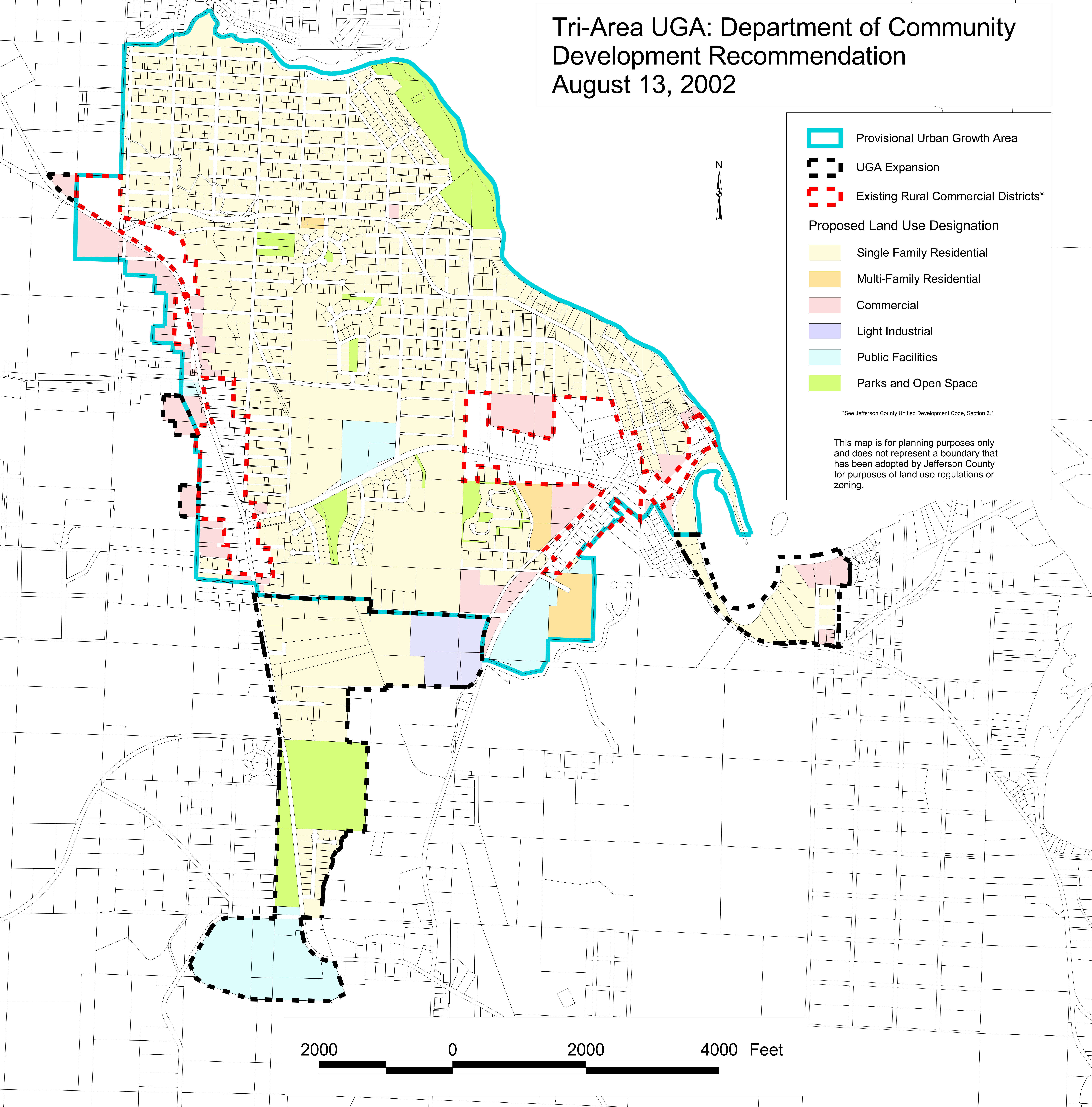


Tri-Area UGA: Department of Community Development Recommendation

August 13, 2002



- Provisional Urban Growth Area
- UGA Expansion
- Existing Rural Commercial Districts*

Proposed Land Use Designation

- Single Family Residential
- Multi-Family Residential
- Commercial
- Light Industrial
- Public Facilities
- Parks and Open Space

*See Jefferson County Unified Development Code, Section 3.1

This map is for planning purposes only and does not represent a boundary that has been adopted by Jefferson County for purposes of land use regulations or zoning.