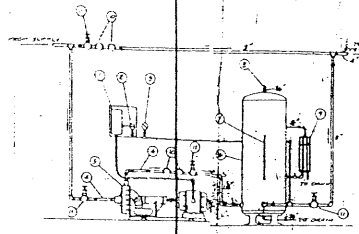
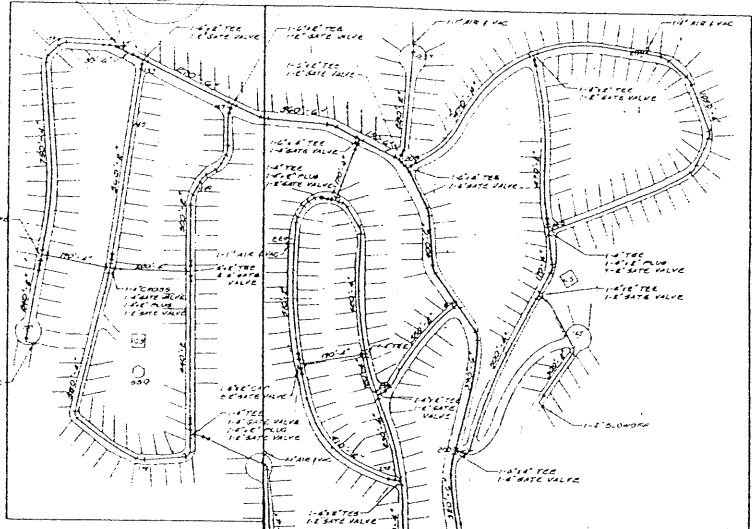


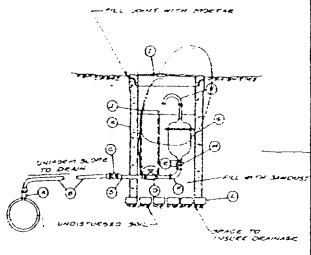
1/2" TEE
1/2" GATE VALVE
1/2" AIR VALVE
1/2" GATE VALVE



HYDRO-PNEUMATIC PRESSURE SYSTEM
NOT SCALE

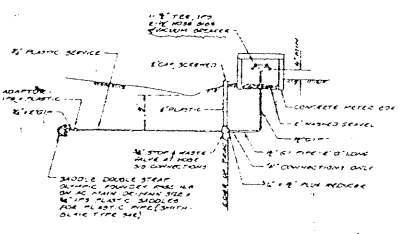
MATERIALS LIST

- A. COMBINATION STOP VALVE MULLER NO. H-500, 1"
- B. COPPER PLUMBING ASTM B36 PIPE 1/2" DIA.
- C. 1" CONCRETE ANCHOR BOLT FOR 1/2" DIA. PIPE
- D. 1" CLEAR STOP VALVE AND 1/2" DIA.
- E. 1" HANDLE, GALVANNEED
- F. 1" 90° ELBOW, GALVANNEED
- G. 1/2" BRASS AIR VACUUM VALVE, PRIMER COPELAND MODEL NO. 105, 1" INLET
- H. 1/2" GALVANNEED STEEL PIPE 1/2" DIA. WITH TRAP RETURN BEND
- I. GALVANNEED STEEL PIPE 1/2" DIA. WITH CONCRETE BOLT (1/2" DIA. BOLT WITH CONCRETE BOLT LID)
- J. CONCRETE BOLT LID
- K. CONCRETE PIPE JOINT SIMILAR TO JOINTS USED IN TRAPS FOR CIRCULAR BASKETS IN ROOVES. 1/2" DIA.
- L. CONCRETE JOINT
- M. GALVANNEED BRASS JOINT UNDER NO SCALE

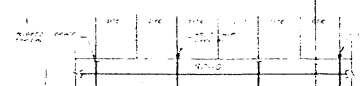


AIR VACUUM VALVE INSTALLATION

EACH AIR RELEASE ASSEMBLY SHALL BE INSTALLED ON THE HIGHEST PART OF EACH TANK AND AT THE LOCATION SHOWN ON THE PLANS.



WATER SERVICE "P & H"



TYPICAL SERVICE CONNECTION

NOTES

- 1. ALL WORK SHALL BE IN ACCORDANCE WITH STANDARD SPECIFICATIONS FOR CONSTRUCTION OF WATER STORAGE TANKS AND PIPING AS SET FORTH IN THE SPECIFICATIONS AND AS NOTED ON THE PLANS.
- 2. WATER STORAGE TANKS SHALL BE CONSTRUCTED OF CONCRETE.
- 3. ALL JOINTS AND CONNECTIONS SHALL BE MADE IN ACCORDANCE WITH THE SPECIFICATIONS AND AS NOTED ON THE PLANS.
- 4. INSTALL THE WATER MAIN AS NOTED ON THE PLANS.
- 5. WATER MAIN SHALL BE INSTALLED IN ACCORDANCE WITH THE SPECIFICATIONS AND AS NOTED ON THE PLANS.
- 6. INSTALLATION OF WATER MAIN SHALL BE MADE IN ACCORDANCE WITH THE SPECIFICATIONS AND AS NOTED ON THE PLANS.
- 7. PROVISIONS IN WATER MAIN SHALL BE MADE IN ACCORDANCE WITH THE SPECIFICATIONS AND AS NOTED ON THE PLANS.
- 8. READ LOCATIONS APPROXIMATELY. INSTALL AS REQUIRED TO LIMIT DOWN DEFLECTION PER THE SPECIFICATIONS.
- 9. INSTALL AND PUMP VALVES AS NOTED ON THE PLANS AS DETERMINED IN THE FIELD.
- 10. ALL WATER MAINS TO BE TESTED TO 150 P.S.I. FOR 24 HOURS PER SQUARE FEET.

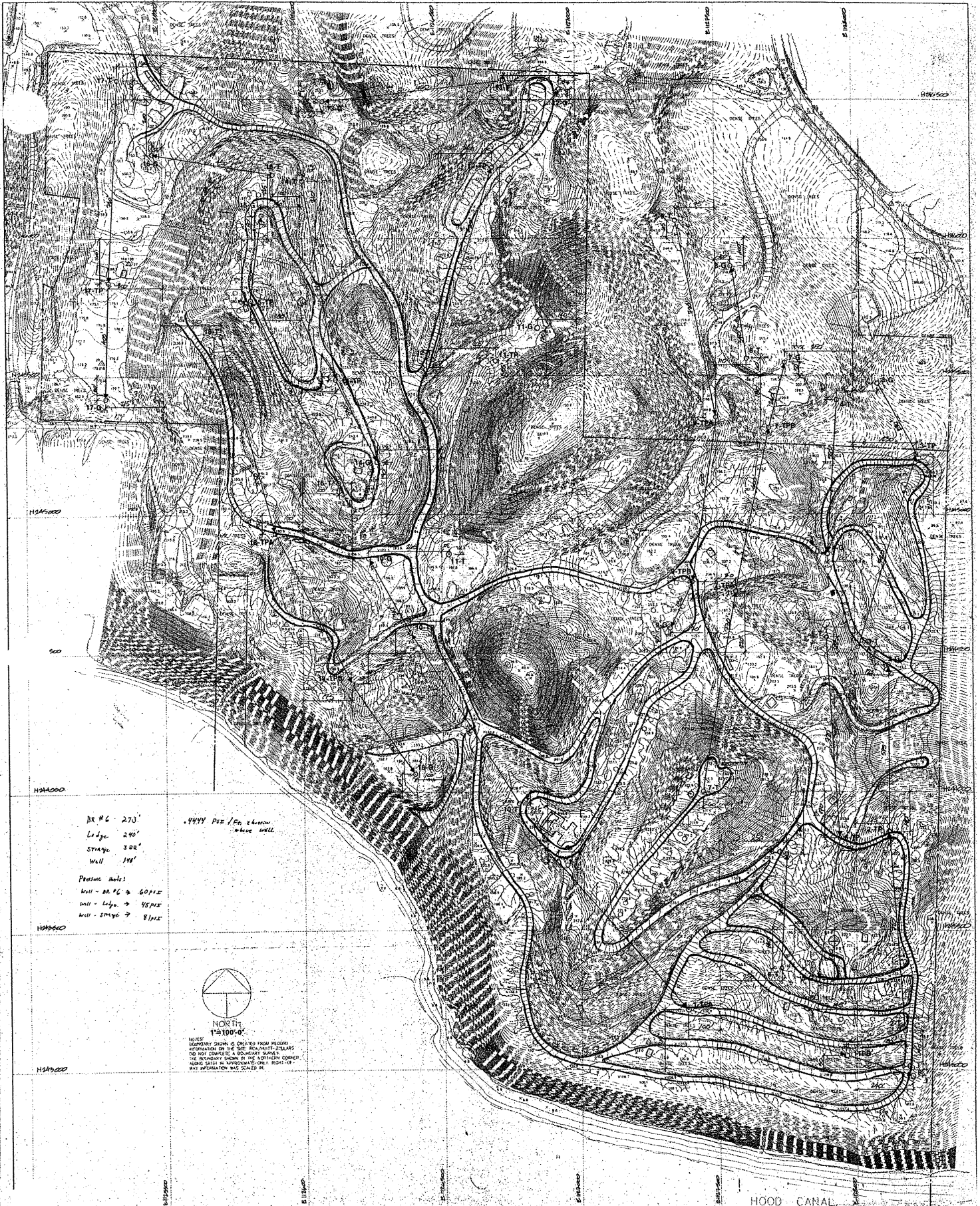
APPROVED
MOORE WALLACE & KERNHUBER
JUL 18 1952

RECEIVED
JUL 18 1952
ASS. EN. OF HEALTH
BIRMINGHAM



BLACK POINT WATER STORAGE TANK

MOORE WALLACE & KERNHUBER
INCORPORATED
1000 1/2 AVENUE
BIRMINGHAM, ALABAMA



PRELIMINARY CENTER LINE PLAN

15 THE ENGINEERING CENTER
 1000 15th Street, N.E.
 Atlanta, Georgia 30309
 (404) 525-8800