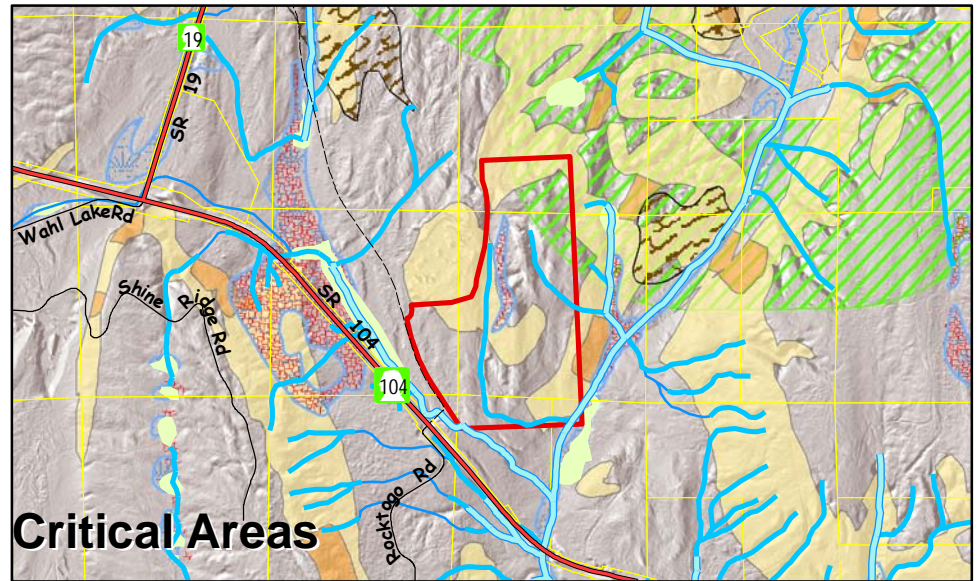
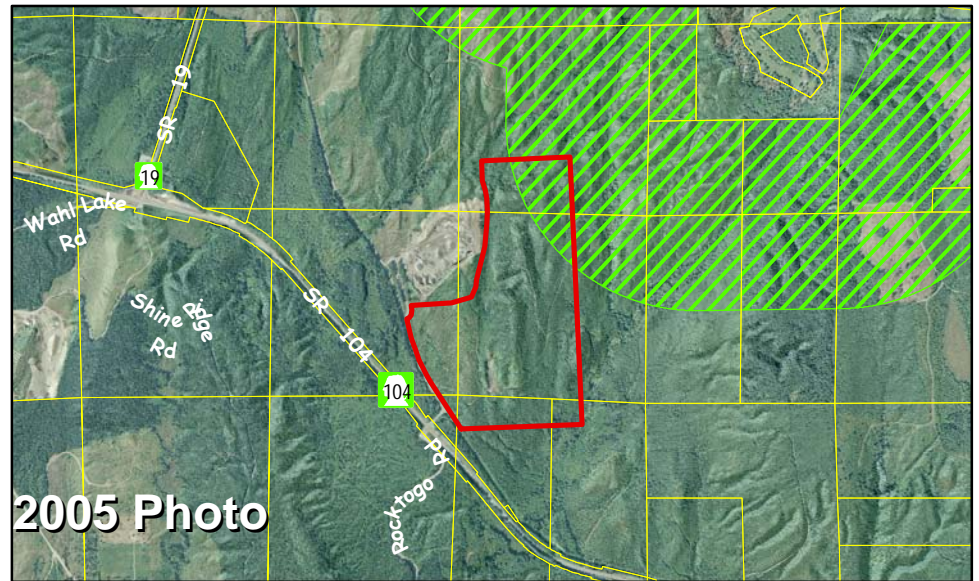
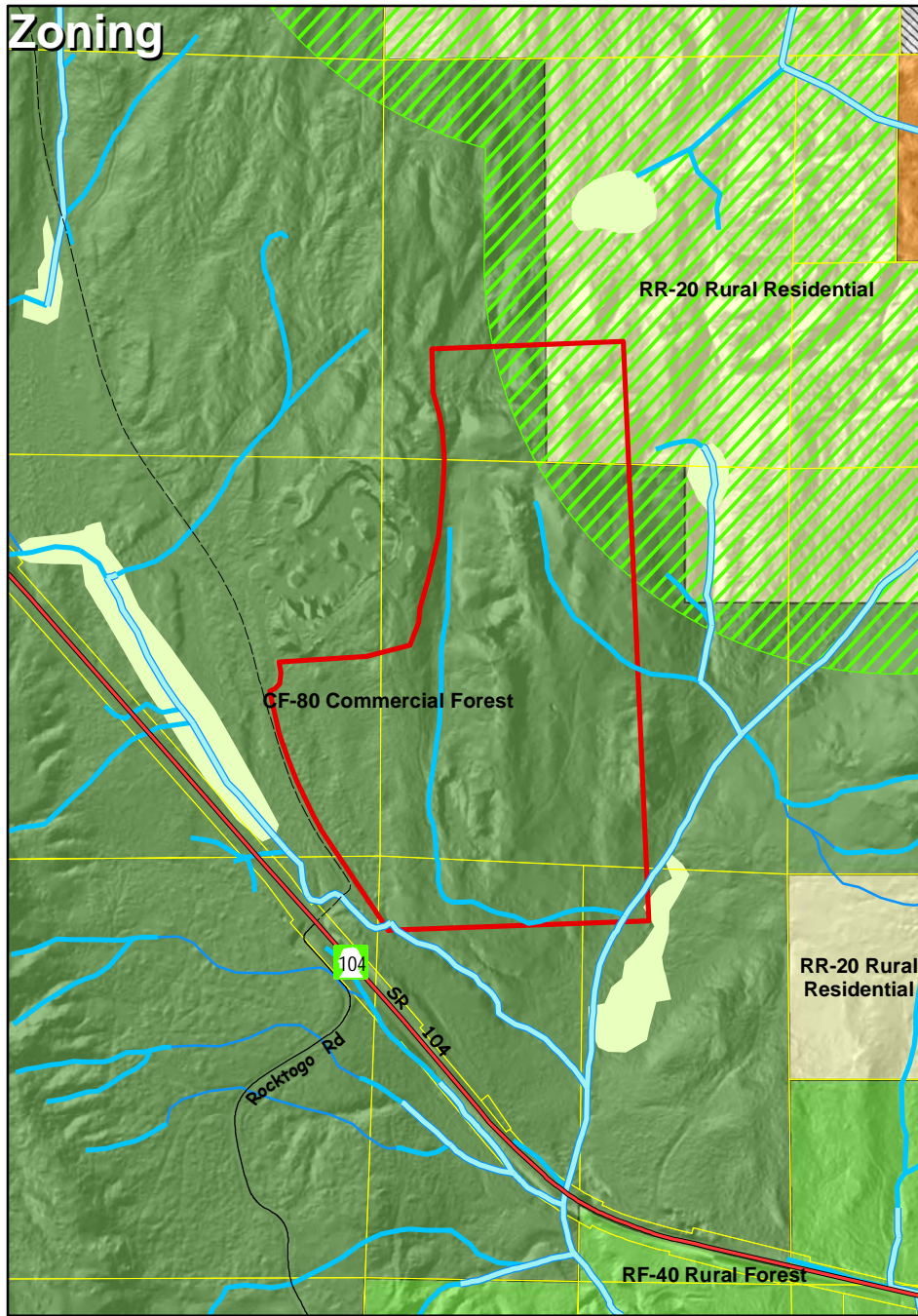
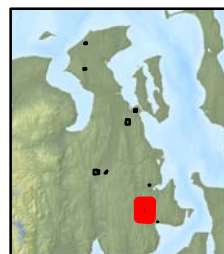


# Zoning



2008 Comprehensive Plan  
Amendment Application

Burnett/Pope  
MLA08-93 A-7



- |                                      |                               |                                 |                                      |  |
|--------------------------------------|-------------------------------|---------------------------------|--------------------------------------|--|
| <b>Legend</b>                        | <b>DNR FP Stream Class</b>    | <b>Soil Landslide Potential</b> | <b>Local Agriculture</b>             | <b>Prime Agriculture</b>                   |
| F - Fish Habitat                     | 1998-99 Slides                | High                            | Not Zoned                            | Airport Essential Public Facility          |
| N - Non-fish Habitat                 | Moderate                      | Rural Residential (1:5)         | Rural Residential (1:5)              | Waste Management Essential Public Facility |
| S - Invertebrate Shoreline           | Bright                        | Rural Residential (1:10)        | Rural Residential (1:20)             | Military Reservation                       |
| U - Unknown; X - Applicant Parcel(s) | Port Ludlow MPR               | Resource Based Industrial       | Industrial (I1)                      | Parks, Preserves, Recreation               |
| <b>DNR Water Bodies</b>              | Port Ludlow MPR 5 mile Buffer | Light Industrial/Manufacturing  | Light Industrial                     | Olympic National Forest                    |
| F                                    | Public                        | Light Industrial/Commercial     | Rural Village Center                 | Protection Island Wildlife Refuge          |
| N                                    | Quauabuk Tribal Reservation   | Convenience Crossroads          | Urban Commercial                     | Water and Tidelands                        |
| S                                    | Hoh Tribal Reservation        | Neighborhood Crossroads         | Single Family Tracts (MPR-SF 4:1)    | Port Townsend UGA                          |
| X                                    | Olympic National Park         | Commercial Forest               | Single Family Tracts (MPR-SFT 1:2.5) | Single Family (MPR-SF 10:1)                |
| Wetlands                             | Visitor Oriented Commercial   | Open Space Reserve (MPR-OSR)    | General Crossroads                   | Multiple Family (MPR-MF 10:1)              |
| Seismic Hazard                       | Low Density Residential       | Recreation Area (MPR-RA)        | Resort Complex (MPR-RC/CF 10:1)      | Village Commercial Center (MPR-VCC)        |
| Seismic Hazard                       | Moderate Density Residential  | Inholding Forest                | Open Space Reserve (MPR-OSR)         | Open Space Reserve (MPR-OSR)               |
|                                      | High Density Residential      |                                 | Recreation Area (MPR-RA)             | Recreation Area (MPR-RA)                   |

Working Date: Monday, August 15, 2008  
 File: G:\MapInfo\2008\MapInfo - Application\MapInfo\MapInfo - All.mxd  
 Requested By: Doug Robinson  
 Date: 8/15/2008 10:00:00 AM  
 Author: Doug Robinson  
 Project Number: 08-11719  
 Date: 8/15/2008 10:00:00 AM  
 All rights reserved. No part of this publication may be reproduced, stored in a retrieval system, or transmitted in any form or by any means, electronic, mechanical, photocopying, recording, or by any information storage and retrieval system, without the prior written permission of the publisher.