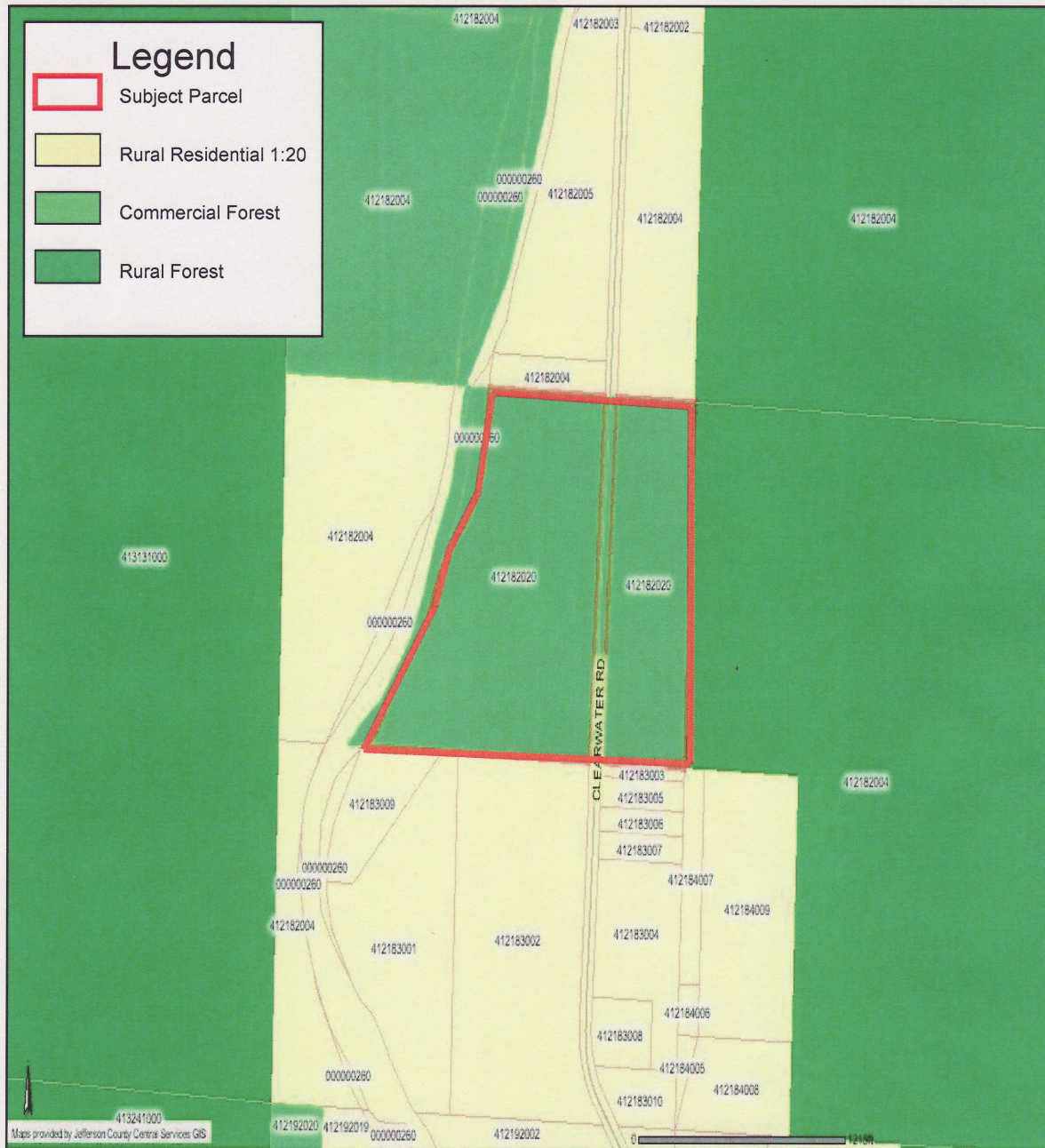


## Appendix B.4: MLA 07-93

### Rayonier/Terra Pointe (Clearwater)

### Proposed Rezone Rural Forest to Rural Residential



2007 Comprehensive Plan Amendment Cycle. Map source: Jefferson County Central Services GIS jMAP Parcel Map Viewer (<http://www.co.jefferson.wa.us/idms/mapserver.shtml>). Thematic presentation: Department of Community Development. Date: 29 August 2007.